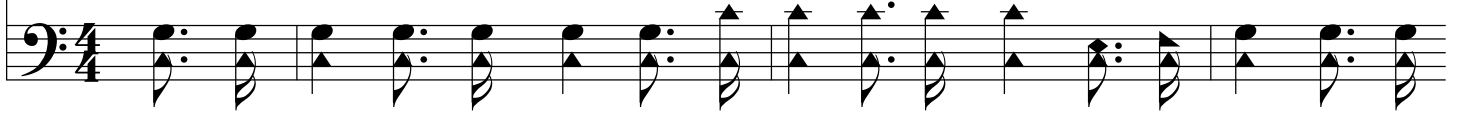


# Go Banish The Night

C/E - MI



1. Go, ye chil - dren of light, Go and ban - ish the night, Go as her - alds of  
2. Go, what - e'er may be - tide, O'er the de - sert so wide, Bid the weak and de -  
3. Where the sun - light may gleam, O - ver lake - let or stream, O'er the wild, rough and



Christ and the day; Go, sal - va - tion pro - claim, In the Sav - ior's dear name,  
spair - ing a - rise; That each heart may en - throne The Re - deem - er a - lone,  
lone - ly high - way; Go from shore un - to shore, Go in faith ev - er - more,



*D. S.*—Till o'er val - ley and plain, Our Re - deem - er shall reign,

## *Fine Refrain*



Go and drive all the dark - ness a - way.  
And to Him lift their sin - dark - ened eyes. O - ver moun - tain and sea,  
Bear the light of the glad gos - pel day.



And the wan - d'ring are bro't to the fold.

## *D. S. al Fine*



Where the lost ones may be, Let the news of re - demp - tion be told;

