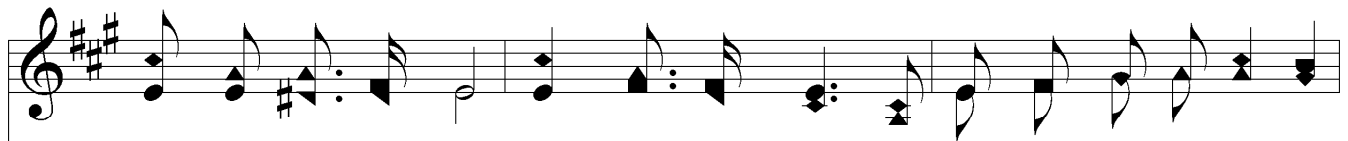


# Go Ye Into All the World



1. Far, far a - way, in hea - then dark - ness dwell - ing, Mil - lions of souls for -  
 2. See o'er the world the o - pen doors in - vit - ing, Sol - diers of Christ, a -  
 3. "Why will ye die?" the voice of God is call - ing, "Why will ye die?" re -  
 4. God speed the day, when those of ev - 'ry na - tion "Glo - ry to God!" tri -

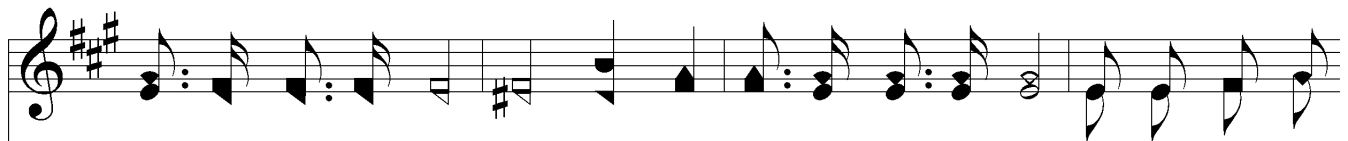


ev - er may be lost; Who, who will go, sal - va - tion's sto - ry tell - ing,  
 rise and en - ter in! Breth - ren, a - wake! our forc - es all u - nit - ing,  
 ech - o in His name; Je - sus hath died to save from death ap - pal - ling,  
 um - phant - ly shall sing; Ran - somed, re - deemed, re - joic - ing in sal - va - tion,



## Chorus

Look - ing to Je - sus, heed - ing not the cost?  
 Send forth the gos - pel, break the chains of sin. "All pow'r is  
 Life and sal - va - tion, there - fore, go pro - claim.  
 Shout "Hal - le - lu - jah, for the Lord is King!"



giv - en un - to Me, All pow'r is giv - en un - to Me, Go ye in - to



# *Go Ye Into All the World*

The image shows a musical score for the hymn "Go Ye Into All the World". It consists of two staves: a treble clef staff at the top and a bass clef staff at the bottom. Both staves are in the key of D major, indicated by two sharps (F# and C#). The melody is written in the treble staff, and the bass line is in the bass staff. The lyrics are written below the treble staff. The music is in 4/4 time and ends with a double bar line.

all the world and preach the gos - pel, And lo, I am with you al - ways."