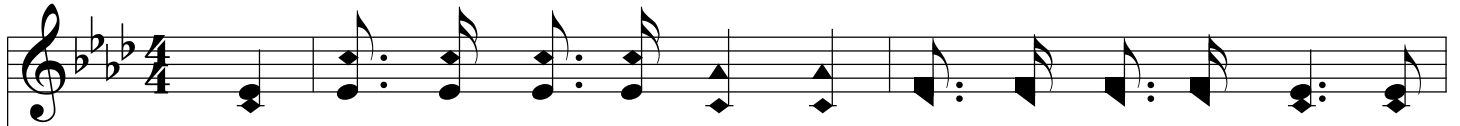
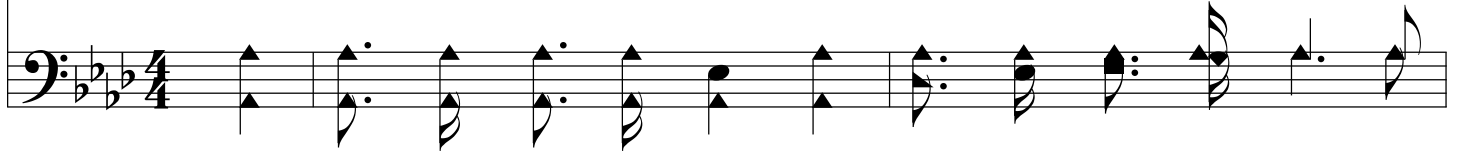


# God Is On His Throne

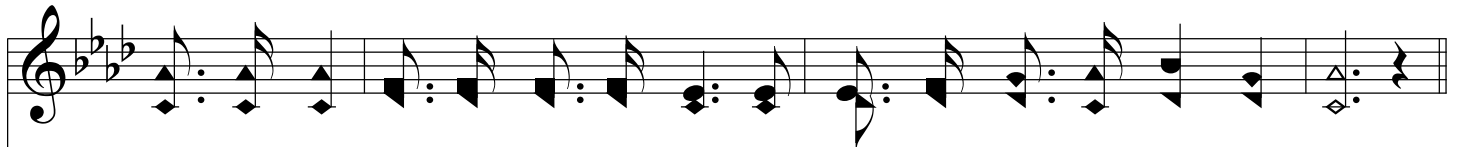
Ab/Eb - SOL



1. Let not your heart be trou - bled, Nei - ther be a - fraid; If  
2. Let not your heart be trou - bled! Noth - ing can be - tide To  
3. Temp - ta - tions may be - set you, Tri - als ver - y sore With



ye be - lieve in God, be - lieve al - so in Me; I will not leave you  
do you ill and harm, to fill you with a - larm; For in His bless - ed  
ev - 'ry dawn - ing day may meet you on the way; Let not your heart be



com - fort - less, I will come to aid; A Friend and Help - er I will be.  
fel - low - ship, safe you shall a - bide, Se - cure be - neath His shel - t'ring arm.  
trou - bled, but trust Him more and more, For He will be with you al - way.



## Chorus



Fear not, fear not, God is on His throne; Trust Him, He who



# God Is On His Throne

car - eth for His own; He is a faith - ful Friend, and

you He will de - fend, And nev - er leave His child to walk a - lone.

The image shows a musical score for the hymn "God Is On His Throne". It consists of two systems of music. Each system has a vocal line (treble clef) and a piano accompaniment line (bass clef). The key signature is three flats (B-flat, E-flat, A-flat), and the time signature is 4/4. The lyrics are: "car - eth for His own; He is a faith - ful Friend, and you He will de - fend, And nev - er leave His child to walk a - lone." The piano accompaniment features a steady eighth-note bass line and chords in the right hand.