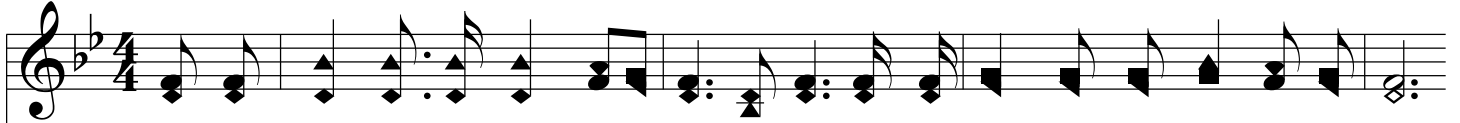


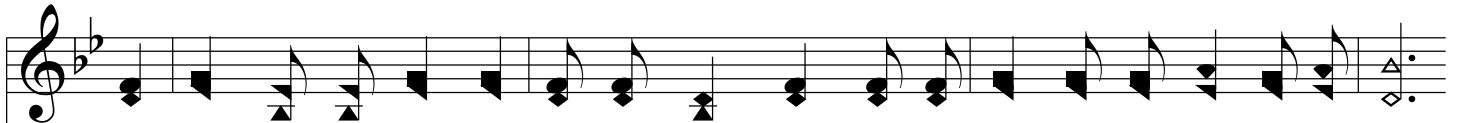
Hold On

2 Thess. 3:13

B \flat /F - SOL



1. If your hand's on the plow, hold on, hold on; Tho' the soil may be ster - ile and hard,
2. If your heart's in the work, hold on, hold on; Tho' the way should be gloom - y and sad,



The plow-share will make The fal - low ground break, And the plow-man will have his re - ward;
A light will ap - pear, The path-way be clear, And the heart of the work - er be glad;



Earth's bos - om will spar - kle with em - er - ald green, And its grain will be gold - en king;
Heav'n's por - tals will o - pen, and mu - sic re - sound, And the man - sions of bliss will ring



The reap - ers will come, with loud "Har - vest Home," And the glean - ers will joy - ful - ly sing.
With praise for the brave, Who la - bor to save, And the an - gels will joy - ful - ly sing.



Hold On

Chorus

Hold on, hold on, my broth - er, hold on, Hold on till the prize is won;
Hold on Hold on,

How on to the plow, And wea - ry not now, For the work is al - most done.
hold on

The image shows a musical score for the chorus of the song "Hold On". It consists of two systems of music. Each system has a vocal line on a treble clef staff and a piano accompaniment on a bass clef staff. The key signature is one flat (B-flat), and the time signature is 4/4. The first system contains the lyrics: "Hold on, hold on, my broth - er, hold on, Hold on till the prize is won; Hold on, Hold on,". The second system contains the lyrics: "How on to the plow, And wea - ry not now, For the work is al - most done. hold on". The piano accompaniment features a steady bass line with chords and some melodic movement in the right hand.