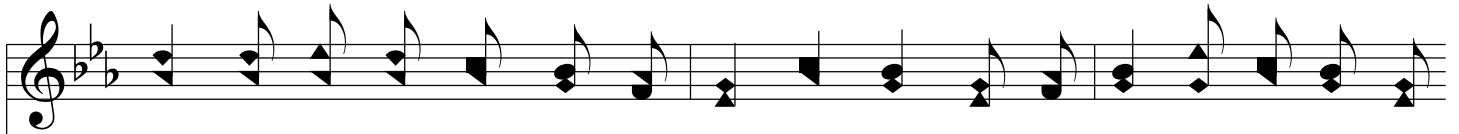


If Your Heart Keeps Right

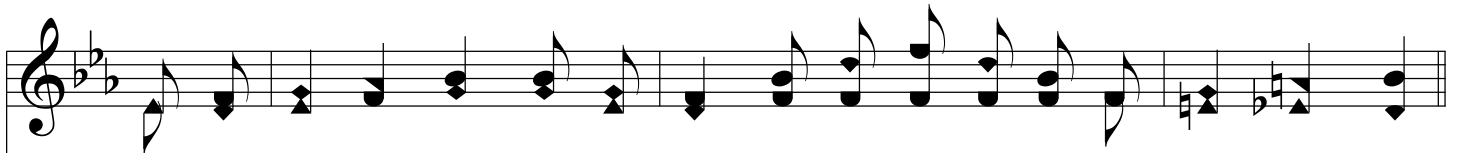
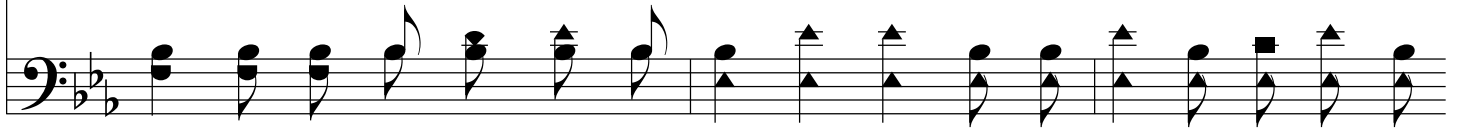
E♭/G - MI



1. If the dark shad - ows gath - er As you go a - long, Do not
2. Is your life just a tan - gle, Full of toil and care? Smile a
3. There are blos - soms of glad - ness 'Neath the win - ter's snow, From the



grieve for their com - ing, Sing a cheer - y song; There is joy for the tak - ing,
bit as you jour - ney, Oth - ers' bur - dens share; Do not take trou - ble hard - er
gloom and the dark - ness Comes the morn - ing's glow; Nev - er give up the bat - tle,



It will soon be light, - Ev - 'ry cloud wears a rain - bow If your heart keeps right.
Than you real - ly might, Skies will grow blue and sun - ny If your heart keeps right.
You will win the fight, Gain the rest of the vic - tor, If your heart keeps right.



Chorus



If your heart keeps right, If your heart keeps right, There's a song of



If Your Heart Keeps Right

glad - ness in the dark - est night; If your heart keeps right, If your

heart keeps right, Ev - 'ry cloud will wear a rain - bow, If your heart keeps right.

The image shows a musical score for the song "If Your Heart Keeps Right". It consists of two systems of music. Each system has a vocal line (treble clef) and a piano accompaniment line (bass clef). The key signature is two flats (B-flat and E-flat), and the time signature is 4/4. The lyrics are: "glad - ness in the dark - est night; If your heart keeps right, If your heart keeps right, Ev - 'ry cloud will wear a rain - bow, If your heart keeps right." The piano accompaniment features a steady bass line with chords and some melodic movement in the right hand.