

# I'll Be A Sunbeam

John 13:35

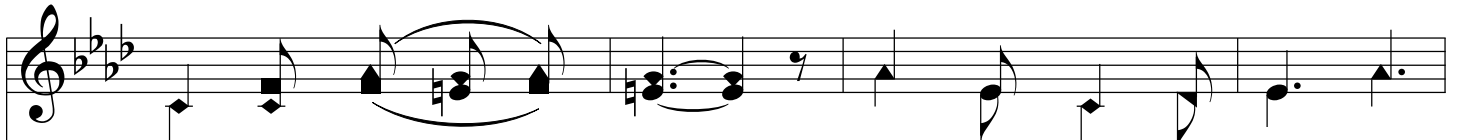
Ab/Eb - SOL



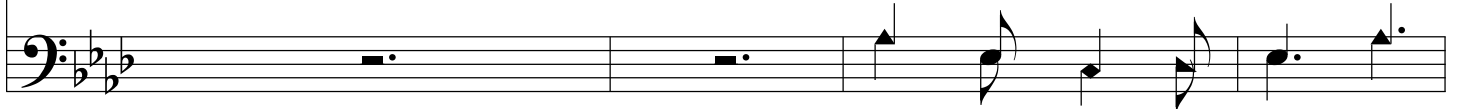
1. If I were a sun-beam, This is what I'd do,— I'd find the dark  
2. So man-y dark plac-es In this world of sin, Why not be a  
3. If we are like Je-sus— Sun of Right-eous-ness— Who left the bright



plac-es, Search-ing the for-est thru; I would kiss the pale flow-ers,  
sun-beam, Let-ting the love-light light God's beau-ti-ful love-light,—  
man-sions, Lone-ly lives to bless, 'Twill be sweet-est pleas-ure



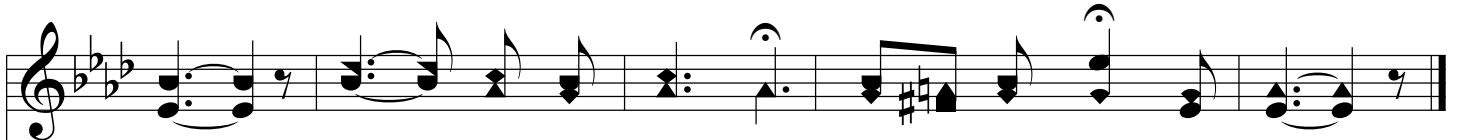
Bend-ing low at my feet, Till each lone-ly blos-som  
Smiles and words of cheer: Kind-ness is the sun-shine  
Of His love to tell, Shin-ing out His glad-ness



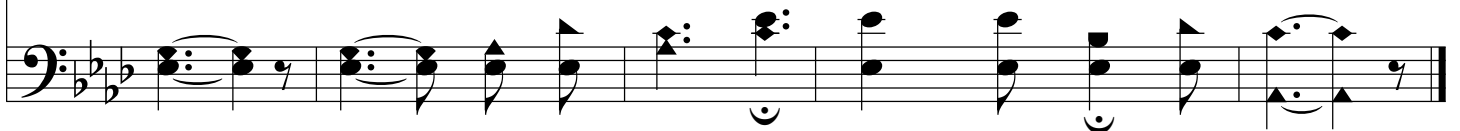
## Chorus



O - pen'd fair and sweet.  
We should scat-ter here. Beau - ti - ful sun - beam! God sent you  
Where the sad ones dwell.



here; I'll be a sun-beam, \*Lone-ly hearts to cheer.



\*Mother's heart; Baby's heart; Brother's heart, etc.