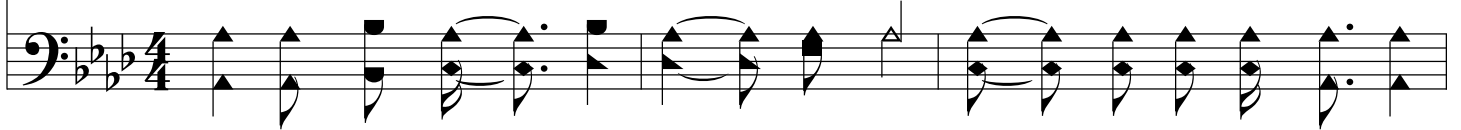


# I'm Going Through

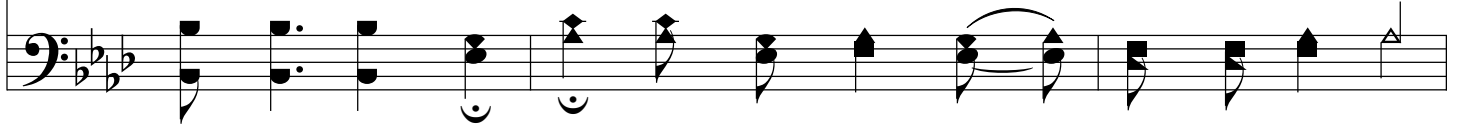
A/C - MI



1. Lord I have start - ed to walk in the light Shin - ing up - on me from  
2. Man - y there are who start in the race, But with the light they re -  
3. I'd ra - ther walk with Je - sus a - lone, And have for my pil - low, like  
4. O, broth - er will you now take up the cross, Count all the pleas - ures of



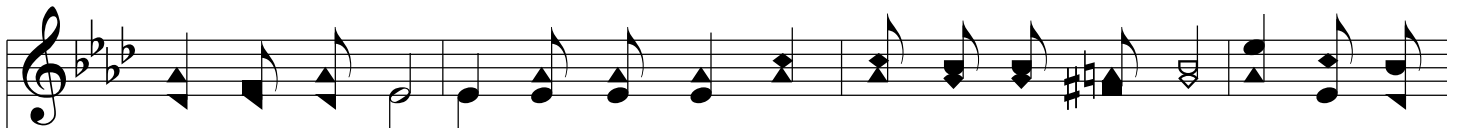
Heav - en so bright; I've bade the world and its fol - lies a - dieu,  
fuse to keep pace; Oth - ers ac - cept it be - cause it is new,  
Ja - cob, a stone; Liv - ing each mo - ment with His face in view,  
this world as dross; Sell what thou hast and give to the poor,



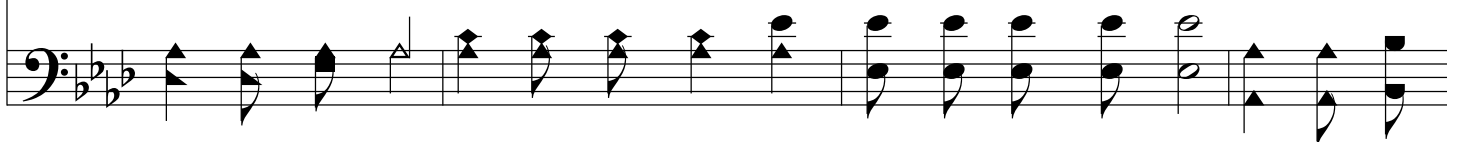
## Chorus



I've start - ed in Je - sus, I'm go - ing thru.  
But not ver - y man - y in - tend to go thru. I'm go - ing thru, Je - sus,  
Than shrink from the path - way and fail to go thru.  
Then go thru with Je - sus and those who en - dure.



I'm go - ing thru, I'll pay the price what - ev - er oth - ers do; I'll take the



# *I'm Going Through*

way with the world de - spis - ed few I've start - ed in, Je - sus, I'm go - ing thru.

The image shows a musical score for the song "I'm Going Through". It consists of two staves: a treble clef staff on top and a bass clef staff on the bottom. The key signature is three flats (B-flat, E-flat, A-flat), and the time signature is 4/4. The melody is written in the treble clef, and the bass line is in the bass clef. The lyrics are written below the treble staff, aligned with the notes. The lyrics are: "way with the world de - spis - ed few I've start - ed in, Je - sus, I'm go - ing thru." The music ends with a double bar line.