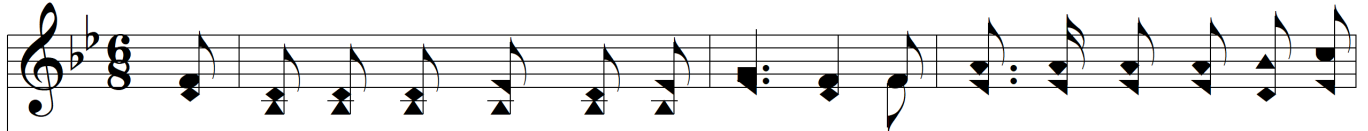
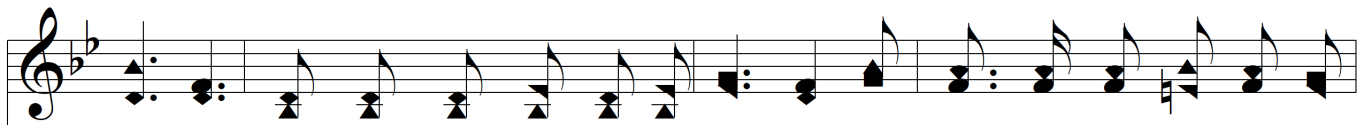


Is Your Lamp Burning?



1. Say, is your lamp burn - ing? O Chris - tian? I pray you look quick - ly and
2. Re - mem - ber how man - y a - round you Will fol - low wher - ev - er you
3. There's man - y a lamp that is light - ed, We see them from near and from
4. But if they were trimmed night and morn - ing They'd nev - er burn down nor go
5. If once all the lamps that are light - ed Should stead - i - ly blaze in a
6. How all the dark plac - es would bright - en! The mists would roll up and a -



see, For if it were burn - ing, then sure - ly Some beams would fall bright - ly on
go; The thought that they walked in the shad - ow Would make your lamp bright - er I
far, But few in their lus - ter and beau - ty Shine stead - i - ly on like a
out, Tho' from the four quar - ters of heav - en The winds were all blow - ing a -
line, Wide o - ver the land and the o - cean, A gir - dle of glo - ry would
way! The earth would laugh out in her glad - ness, To hail the mil - len - ni - al



Chorus



me, Some beams would fall bright - ly on me.
know, Would make your lamp bright - er I know.
star, Shine stead - i - ly on like a star. Lift your lamp high - er,
bout, The winds were all blow - ing a - bout.
shine, A gir - dle of glo - ry would shine.
day! To hail the mil - len - ni - al day.



Is Your Lamp Burning?

Musical score for the hymn "Is Your Lamp Burning?". The score is written in G major (one flat) and 4/4 time. It consists of two systems, each with a treble and bass staff. The lyrics are: "Lift your lamp high - er, high - er, still high - er; Then lift your lamp high - er, O Chris - tian, Lest some should make fa - tal de - lay." The melody is simple and repetitive, with a strong emphasis on the word "high".

Lift your lamp high - er, high - er, still high - er; Then lift your lamp

high - er, O Chris - tian, Lest some should make fa - tal de - lay.