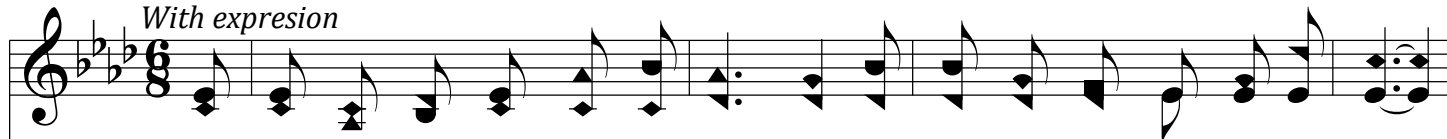


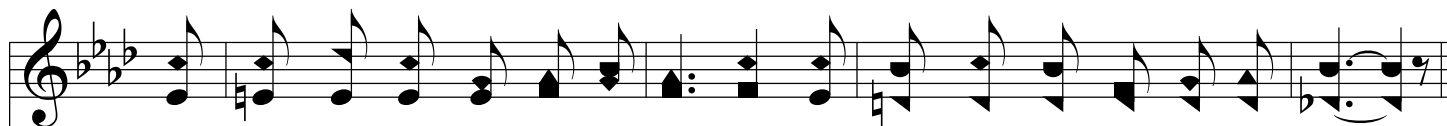
Jesus Is Calling You Home

A \flat /E \flat - SOL

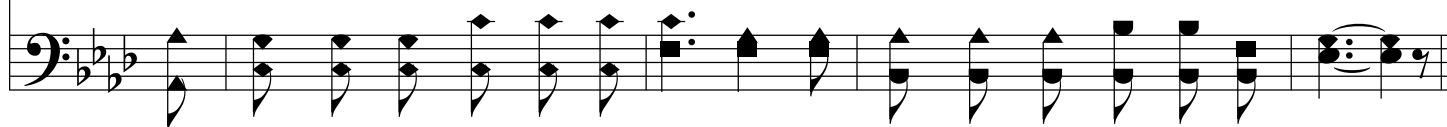
With expression



1. I wan-der'd in dark - ness and sor - row, My soul sore dis-tress'd and a - lone;
2. I lin-ger'd and lin-ger'd, still tread - ing A path by sharp bri - ars o'er grown,
3. At last fill'd with hor - ror of sin - ning, For which I could nev - er a - tone;
4. Since then I have dwelt close to Je - sus, And nev - er been tempt-ed to roam



When thru all my pain and my an-guish, I heard a voice call-ing me home.
And yet I knew well it was Je - sus, So ten - der - ly call-ing me home.
I trem-bling-ly fled to my Sav - ior, Who fold - ed me safe - ly at home.
I'm hap - py, so hap - py in Je - sus, And shel - ter'd se - cure - ly at home.



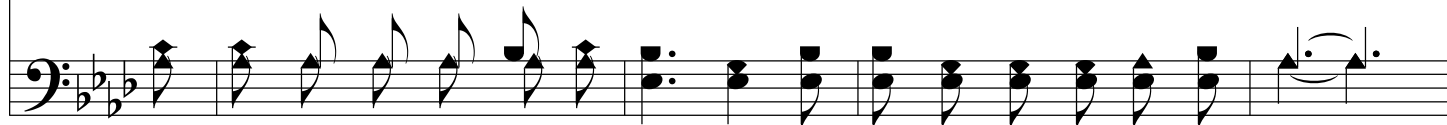
Chorus



Home to His breast, His lov - ing breast, Home to His peace and rest;



No mat - ter how far you have wan-der'd, No mat - ter wher-ev - er you roam;



Jesus Is Calling You Home

pp Rall...

Je - sus in ten - der - est pit - y, Is lov - ing - ly call - ing you home.

The image shows a musical score for the hymn 'Jesus Is Calling You Home'. It consists of two staves: a treble clef staff for the vocal line and a bass clef staff for the piano accompaniment. The key signature is three flats (B-flat, E-flat, A-flat), and the time signature is 4/4. The tempo and dynamics are marked as 'pp Rall...'. The lyrics are written below the vocal staff. The piano accompaniment features a steady eighth-note bass line in the left hand and chords in the right hand.