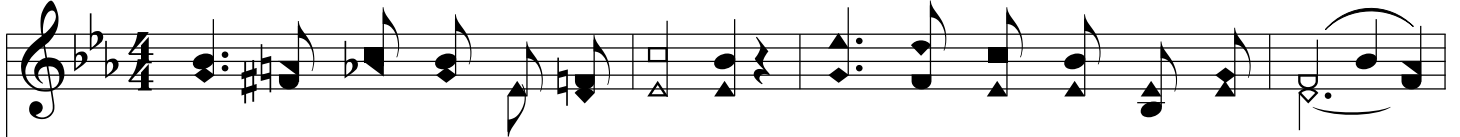


Lift Your Heart In Prayer

E \flat /B \flat - SOL



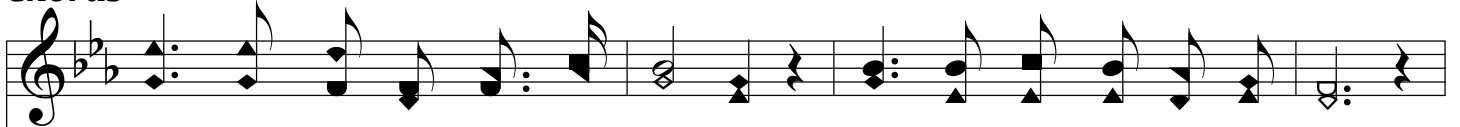
1. Lift your heart in prayer to Je - sus, He is full of truth and grace;
2. Lift your heart in prayer to Je - sus, He can ev - 'ry need sup - ply;
3. Lift your heart in prayer to Je - sus, When you pros - per in the way;
4. Lift your heart in prayer to Je - sus, When in sor - row's dark - est hour,



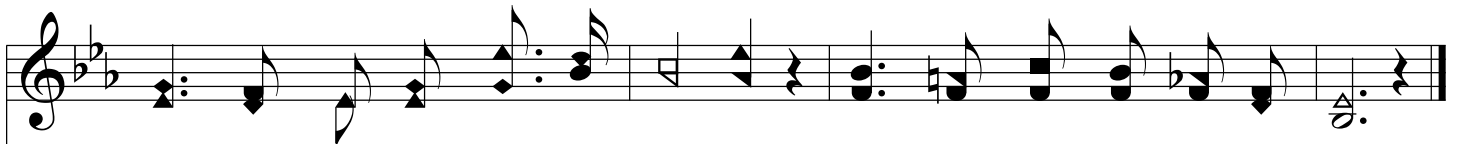
All of light and all of knowl - edge Shin - eth ev - er in His face.
Tell Him all your care and trou - ble, None like Him can sat - is - fy.
For the tempt - er seeks to snare you, Tho' all seems as bright as day.
He will know just how to rest you, Praise His name, He has the pow'r.



Chorus



Lift your heart in prayer to Je - sus, He will lead you all the way;



Lift your heart in prayer to Je - sus, With - out ceas - ing ev - 'ry day.

