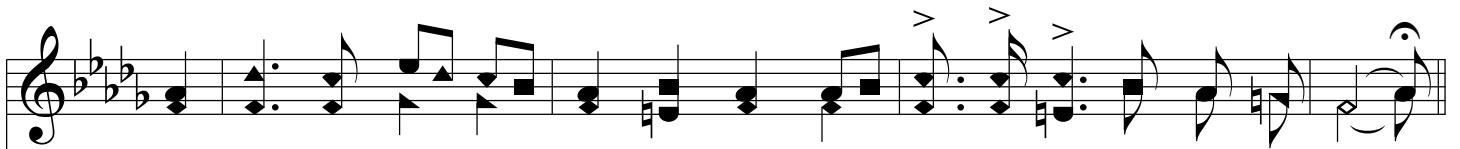


Live In Sunshine

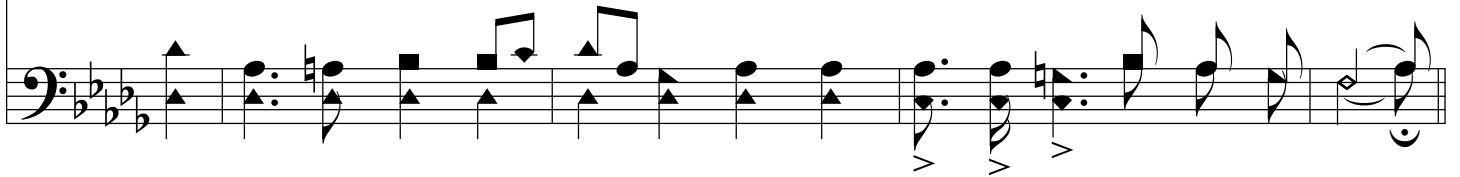
D \flat /A \flat - SOL



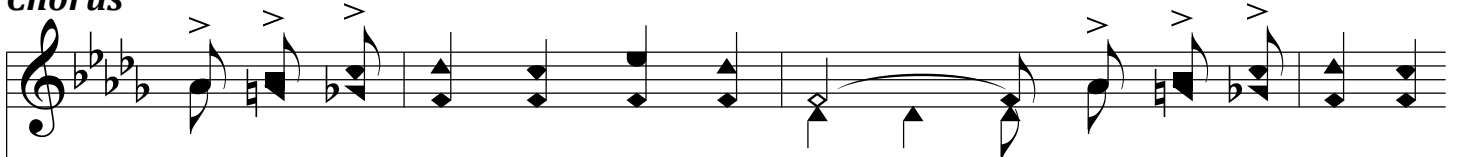
1. This world is not a place for gloom, While sun-shine lights the morn-ing sky,
2. This world is not a place for wrong, While God's dear hand is o-ver all;
3. This world is not a place for tears While Je-sus com-forts those who weep;
4. This world is not a place for sin, For shame, or sor-row, or de-spair,



While blos-soms store their sweet per-fume, For ev-'ry one who pass-es by.
Go meet your sor-row with a song, And noth-ing e-vil shall be-fall.
Let hope and joy re-place your fears— His watch-ful care your ways will keep.
While Je-sus' blood can make us clean, While He will all our bur-dens bear.



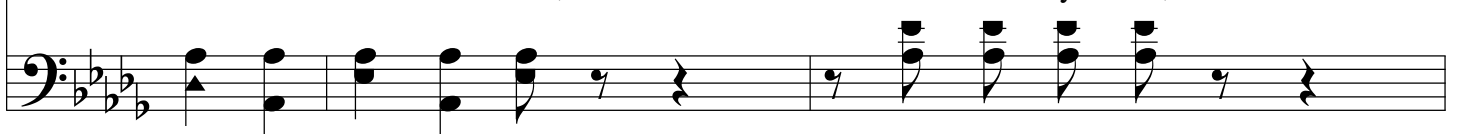
Chorus



Then let not grief your heart be-guile, Meet ev-'ry trou-ble
be-guile,



with a smile; Are an-y sad, go make them
a smile, Are an-y sad,



Live In Sunshine

glad, go make them glad, And live in sun - shine all the while.

The image shows a musical score for the song "Live In Sunshine". It consists of two staves: a vocal line on a treble clef staff and a bass line on a bass clef staff. The key signature has three flats (B-flat, E-flat, A-flat), and the time signature is 7/8. The vocal line begins with a quarter rest, followed by a series of eighth and quarter notes, including a long melisma over the words "sun - shine". The bass line starts with a quarter rest and provides a rhythmic accompaniment with eighth and quarter notes. The lyrics are: "glad, go make them glad, And live in sun - shine all the while."