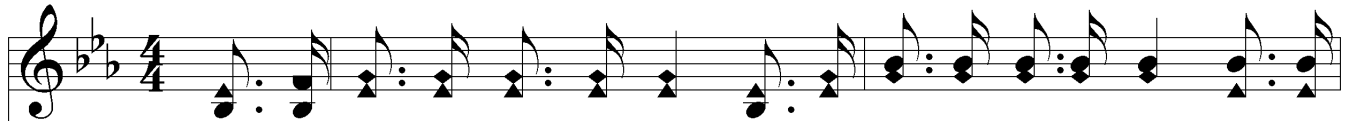


# Meet Me There



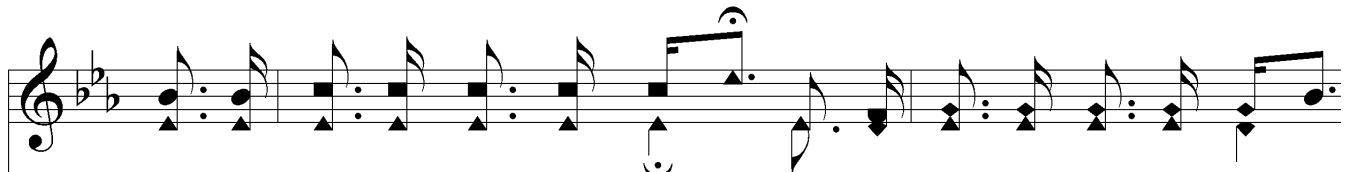
1. On the hap - py, gold - en shore, where the faith - ful part no more, When the  
 2. Here our fond - est hopes are vain, dear - est links are rent in twain, But in  
 3. Where the songs of an - gels ring, and the blest for - ev - er sing, In the



storms of life are o'er meet me there, Where the night dis - solves a - way  
 heav'n no thro' of pain meet me there, By the riv - er spark - ling bright  
 pal - ace of the King, meet me there, Where in sweet com - mun - ion blend



*D.S.*— When the storms of life are o'er,



in - to pure and per - fect day, I am go - ing home to stay,  
 in the cit - y of de - light, Where our faith is lost in sight,  
 heart with heart, and friend with friend, In a world that ne'er shall end,

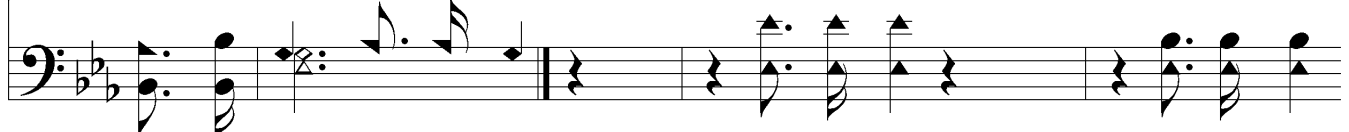


on the hap - py, gold - en shore, Where the faith - ful part no more,

## *Fine Chorus*



meet me there. Meet me there, meet me there,  
 meet me there. Meet me there, meet me there,  
 meet me there.



meet me there.

# Meet Me There

*D.S. al Fine*

Where the tree of life is bloom - ing, meet me there,  
meet me there,

The image shows a musical score for the hymn "Meet Me There". It consists of two staves: a treble clef staff on top and a bass clef staff on the bottom. The key signature is one flat (B-flat major or D minor), and the time signature is 4/4. The melody is written in the treble clef, and the bass line is in the bass clef. The lyrics are placed between the two staves. The first line of the melody ends with a fermata over the final note, and the instruction "D.S. al Fine" is written above it. The second line of the melody begins with a fermata over the first note, and the instruction "D.S. al Fine" is written above it.