

My Sins Are All Taken Away



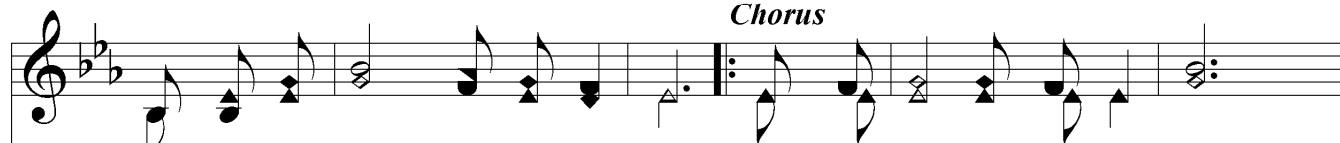
1. He will men - tion them no more for - ev - er, My sins are all
 2. Since I came by faith to Cal - v'ry's foun - tain, My sins are all
 3. On the bot - tom of the sea they're ly - ing, My sins are all
 4. Once the "car - nal mind" was all my pleas - ure, My sins are all
 5. Doubt can nev - er stay where faith is sing - ing, My sins are all



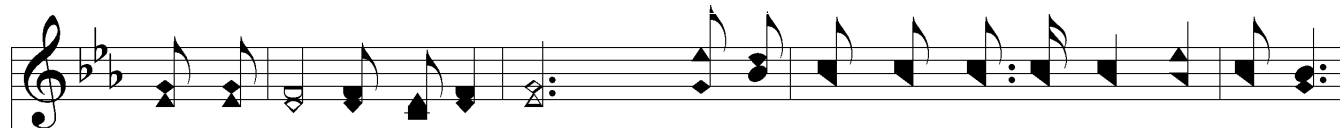
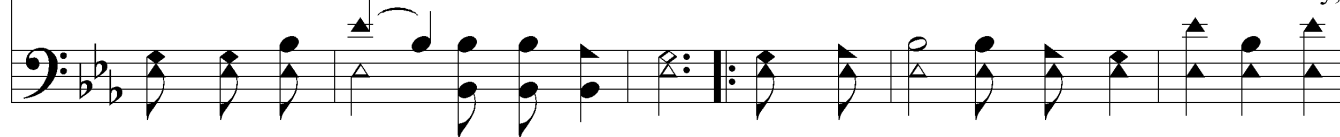
way, - en a - way; For His roy - al prom - ise chang - es nev - er,
 tak - en a - way; Thru the cleans - ing pow'r of that blest foun - tain,
 tak - en a - way; Now the pow'rs of sin and self de - ny - ing,
 tak - en a - way; God's e - ter - nal word is now my treas - ure,
 tak - en a - way; "Praise the Lord" with - in my heart is ring - ing,



Chorus



My sins are all tak - en a - way. They are all tak - en a - way, a - way,



They are all tak - en a - way; He will men - tion them no more for - ev - er,
 a - way,



My Sins Are All Taken Away

1. Praise the Lord! sing it to - day,
Hal - le - lu - jah!

2. My sins are all tak - en a - way.

The image shows a musical score for the hymn "My Sins Are All Taken Away". It consists of two staves: a treble clef staff on top and a bass clef staff on the bottom. The key signature is one flat (B-flat major or D minor), and the time signature is 7/8. The first staff has a first ending bracket over the first four measures, followed by a double bar line and a second ending bracket over the next four measures. The lyrics are placed between the two staves, with the first ending corresponding to the first line of lyrics and the second ending to the second line. The bass staff provides a harmonic accompaniment for the melody.