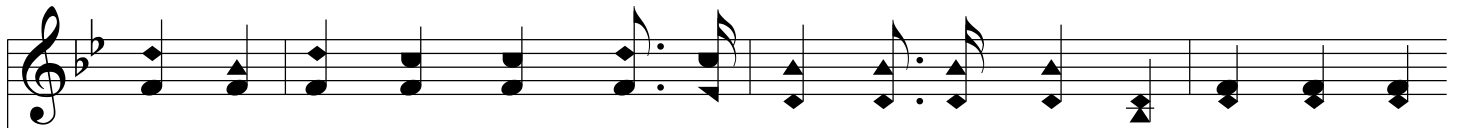


# Power In The Blood

B $\flat$ /F - SOL



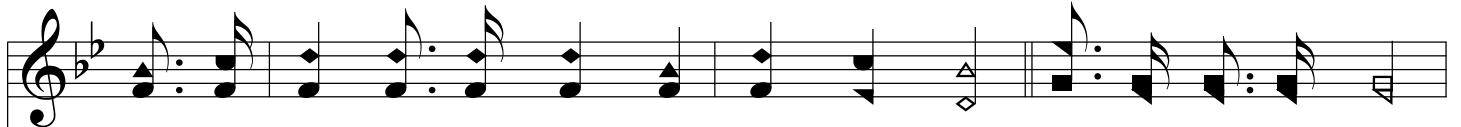
1. There is pow'r in the blood, now, to wash your soul, There is pow'r in the  
2. There is pow'r in the blood, to make you white, There is pow'r in the  
3. There is pow'r in the blood, it's a - ton - ing grace, There is pow'r in the  
4. There is pow'r in the blood, plunge be - neath its wave, There is pow'r in the



blood to keep you whole, There is pow'r in the blood to help you win,  
blood to keep you right, There is pow'r in the blood to lead you on,  
blood for all the race, There is pow'r in the blood, just look on high,  
blood to keep and save, There is pow'r in the blood, be firm and true,



## Chorus



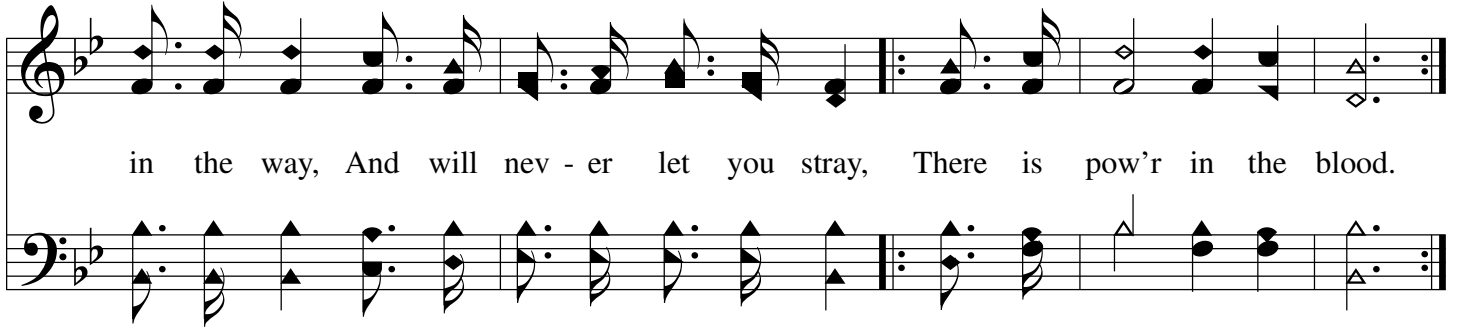
There is pow'r in the blood to save from sin.  
There is pow'r in the blood of God's dear Son. Glo - ry to the Lamb!  
There is pow'r in the blood, 'tis draw - ing nigh.  
There is pow'r in the blood to help, yes, you.



Glo - ry to the Lamb! For He shed His blood for Thee; He will keep you



# *Power In The Blood*



in the way, And will nev - er let you stray, There is pow'r in the blood.

The image shows a musical score for the song "Power In The Blood". It consists of two staves: a vocal line in the treble clef and a bass line in the bass clef. The key signature has one flat (B-flat), and the time signature is 4/4. The vocal line begins with a treble clef, a key signature of one flat, and a 4/4 time signature. The lyrics are: "in the way, And will nev - er let you stray, There is pow'r in the blood." The bass line provides a harmonic accompaniment with chords and single notes.