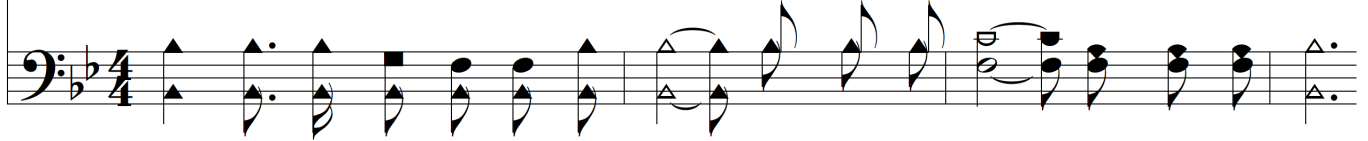


# Rocked In The Cradle Of The Deep



1. Rocked in the cra - dle of the deep, I lay me down in peace to sleep,  
2. And such the trust that still were mine, Tho' storm - y winds swept o'er the brine,



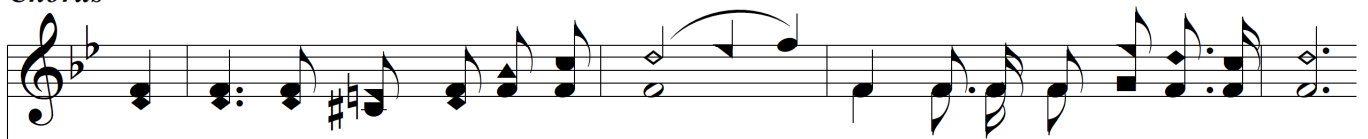
Se - cure I rest up - on the wave, For Thou, O Lord, hast pow'r to save.  
Or tho' the tem - pest's fier - y breath Roused me from sleep to wreck and death.



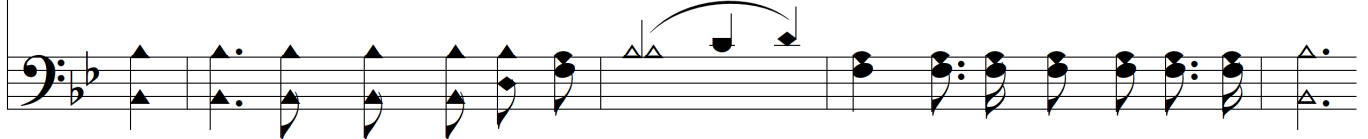
I know Thou wilt not slight my call, For Thou dost mark the spar - row's fall;  
In o - cean cave still safe with Thee, The germ of im - mor - tal - i - ty;



## *Chorus*



And calm and peace - ful is my sleep, Rocked in the cra - dle of the deep,



# *Rocked In The Cradle Of The Deep*

And calm and peace - ful is my sleep,      Rocked in the cra - dle of the deep.

The image shows a musical score for the hymn "Rocked In The Cradle Of The Deep". It consists of two staves: a treble clef staff on top and a bass clef staff on the bottom. The key signature is one flat (B-flat major or D minor), and the time signature is 4/4. The melody is written in the treble clef, and the bass line is in the bass clef. The lyrics are placed between the two staves, aligned with the notes. The score ends with a double bar line.