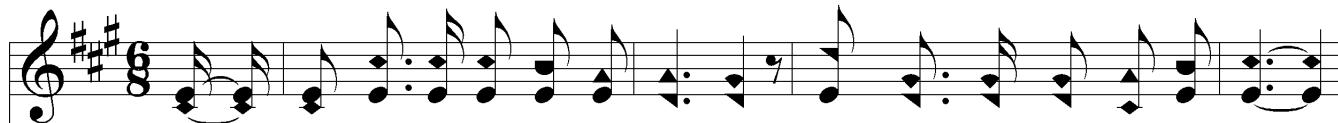


Shining For Jesus

"They that be wise shall shine." – Dan. 12:3



1. Are you shin - ing for Je - sus, my broth - er, Shin - ing so clear and so bright,
2. Are you shin - ing for Je - sus, my broth - er, Shin - ing in deed and in word?
3. Are you shin - ing for Je - sus, my broth - er, Shin - ing for truth and for right,
4. Oh! shine out for Je - sus, my broth - er, Shine where He needs you the most;
5. Shine on - ly and al - ways for Je - sus, Then, when your toil - ing is o'er



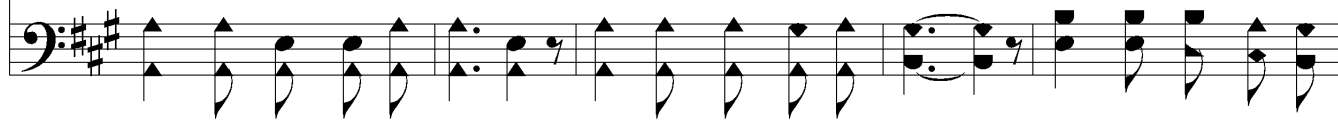
That the souls that are per - ish - ing round you May be guid - ed to Him by your light?
Is your life by its pu - ri - ty show - ing, The like - ness of Je - sus your Lord?
Where bold un - be - lief and its min - ions Are pos - ing as an - gels of light?
And shine where the dark - ness hangs deep - est O'er the path of the stray - ing and lost.
In man - sions of glo - ry e - ter - nal, You shall shine as the stars ev - er - more.



Chorus



Shin - ing for Je - sus, Are you shin - ing to - day? Shin - ing for
Shin - ing, shin - ing, Shin - ing, shin - ing,



Je - sus, Shin - ing all the way, Shin - ing for Je - sus, In this
Shin - ing, shin - ing,



Shining For Jesus

world of care; Shin - ing for Je - sus, Shin - ing ev - 'ry - where.
Shin - ing, shin - ing,

The image shows a musical score for the hymn "Shining For Jesus". It consists of two staves: a treble clef staff on top and a bass clef staff on the bottom. The key signature is two sharps (F# and C#), and the time signature is 4/4. The melody is written in the treble staff, and the bass line is in the bass staff. The lyrics are placed below the treble staff, with the first line of lyrics aligned with the first measure and the second line of lyrics starting under the second measure. The lyrics are: "world of care; Shin - ing for Je - sus, Shin - ing ev - 'ry - where." followed by "Shin - ing, shin - ing," on the next line. The music ends with a double bar line.