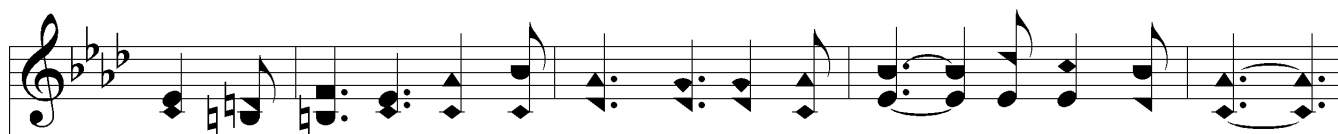


Sunshine On The Hill

"Until the day break and the shadows flee away." – Sol. Song 2:17



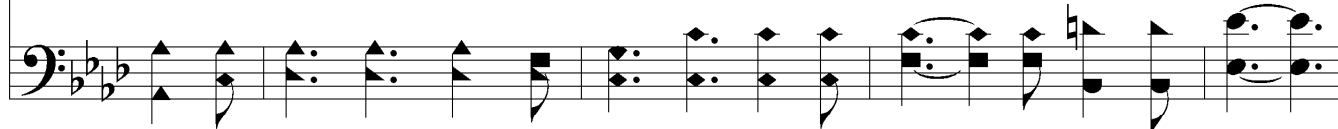
1. There are shad - ows in the val - ley, Where our tir - ed feet must go;
2. There are shad - ows in the val - ley, But we breathe the sweet per - fume
3. O, the shad - ows in the val - ley, Like a dream will pass a - way;



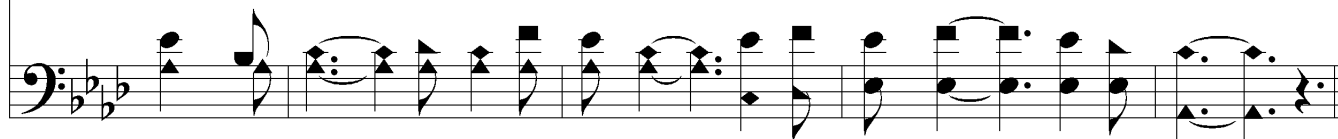
But we hear the peace - ful wa - ters, As they mur - mur soft and low; -
Of the ros - es on the moun - tain, In their love - ly, ver - nal bloom;
They will van - ish at the dawn - ing, Of the bright and glo - rious day;



And our Shep - herd whis - pers gen - tly, As He leads us on - ward still:
And a - gain our Shep - herd whis - pers, As He leads us on - ward still:
E - ven now there comes an ech - o, And we feel its mag - ic thrill:



"There are shad - ows in the val - ley, But 'tis sun - shine on the hill."



Sunshine On The Hill

Chorus

Musical score for the chorus of 'Sunshine On The Hill'. The score is written in G major (one sharp) and 4/4 time. It consists of three systems of music, each with a vocal line and a piano accompaniment line. The lyrics are: 'Sun - shine on the hill, There is sun - shine on the hill; sun - shine, Sun - shine, sun - shine, Sun - shine, on the hill; "There are shad - ows in the val - ley, But 'tis sun - shine on the hill."'

Sun - shine on the hill, There is sun - shine on the hill;
sun - shine,
Sun - shine, sun - shine, Sun - shine, on the hill;

"There are shad - ows in the val - ley, But 'tis sun - shine on the hill."