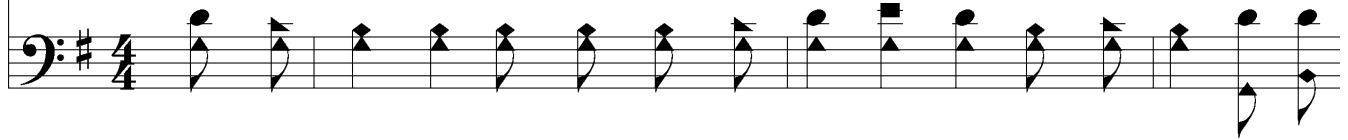


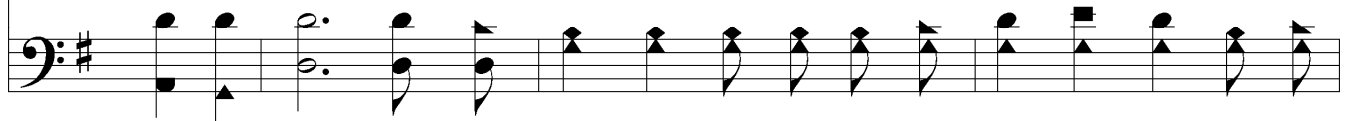
Threat'ning Storms and Tempests May Sweep



1. Threat - 'ning storms and tem - pests May sweep o'er my soul But I dread not the
 2. Doubts and fears may rise to shake my fee - ble faith, And temp - ta - tion my
 3. What have I to fear though wild the bil - lows roll? God is rul - er of
 4. I am safe while hid - ing in my Sav - ior's side, Shel - tered in His al -



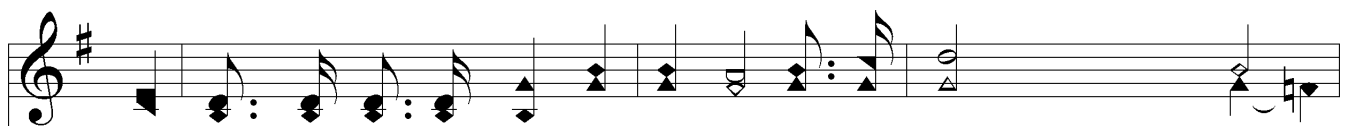
fear - ful shock; I am trust - ing in the ev - er - last - ing God, I am
 soul as - sail; But I stand se - cure - ly on the Sol - id Rock, And they
 wind and wave; While my feet are plant - ed on the Sol - id Rock, Ev - 'ry
 might - y arm; An - chored to the Rock of Ag - es I'm se - cure, God will



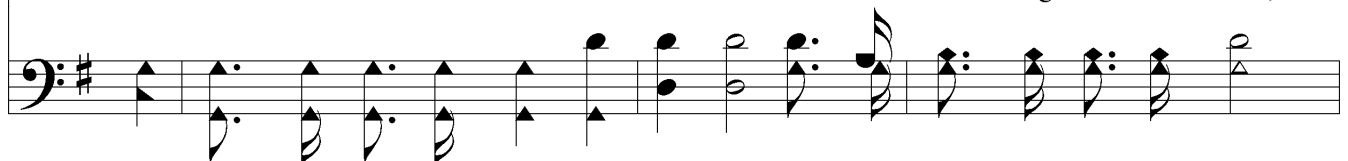
Chorus



stand - ing on the Sol - id Rock. I am stand - ing, stand - ing,
 nev - er, nev - er can pre - vail. I am stand - ing on the Rock, stand - ing on the Rock,
 threat - 'ning per - il I can brave. I am stand - ing on the Rock, stand - ing on the Rock,
 shield me from all ill and harm.



I'm stand - ing on the Rock of Ag - es, I am stand - ing,
 I am stand - ing on the Rock,



Threat'ning Storms and Tempests May Sweep

stand - ing, I'm stand - ing on the Sol - id Rock. A - men.
stand - ing on the Rock,

The image shows a musical score for a hymn. It consists of two staves: a treble clef staff at the top and a bass clef staff at the bottom. Both staves are in the key of D major, indicated by a sharp sign on the F line. The treble staff contains the vocal melody, and the bass staff contains the bass line. The lyrics are written below the treble staff, with hyphens indicating syllables that span across multiple notes. The music concludes with a double bar line.