

The Wayside Cross

B \flat /F - SOL

Solo ad lib... (Declamatory style)



1. "Which way shall I take?" shouts a voice in the night, "I'm a pil - grim a -
2. "Which way shall I take? for the bright gold - en span That bridg - es the
3. "See the lights from the pal - ace in sil - ver - y lines, How they pen - cil the



wea - ried and spent is my light; And I seek for a pal - ace, that
wa - ters so safe - ly for man? To, the right? to the left? ah,
hedg - es and fruit - lad - en vines, My for - tune! my all! for

Slower and sustained

Rit...

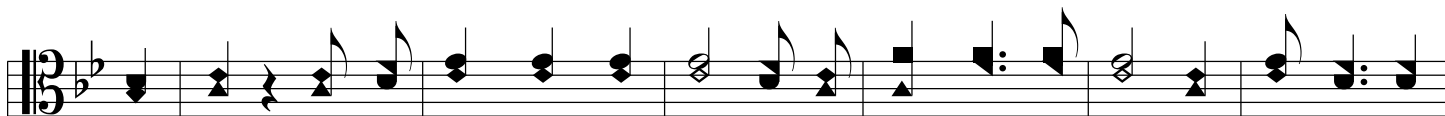


rests on the hill, But be - tween us a stream li - eth sul - len and chill.
me! if I knew, - The night is so dark, and the pass - ers so few."
one tan - gled gleam That sifts thru the lil - ies, and wastes on the stream."

Chorus



Near, near thee, my son, is the old way-side cross, Like a gray fri - ar cowl'd, in li - chens



and moss; And its cross-beam will point to the bright gold - en span That bridg - es the



The Wayside Cross

CODA To be sung after last stanza
pp

The musical score for the Coda is written in 3/4 time with a key signature of one flat (B-flat). It consists of two staves: a vocal line on top and a piano accompaniment line on the bottom. The vocal line begins with a quarter note G4, followed by a dotted quarter note F4, and a quarter note E4. The piano accompaniment starts with a quarter note G3, followed by a dotted quarter note F3, and a quarter note E3. The lyrics are: "wa - ters so safe - ly for man; That bridg - es the wa - ters so safe - ly for man." The score concludes with a double bar line.