

# Victory Is Nigh

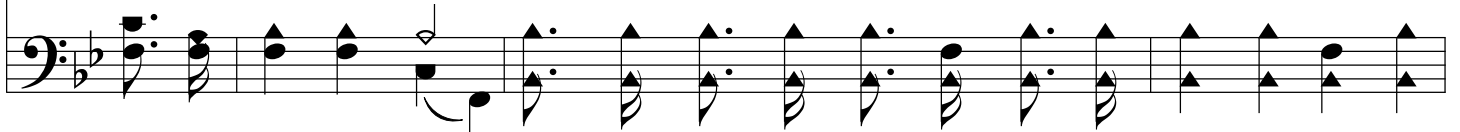
B♭/D - MI



1. March - ing on to bat - tle 'gainst the hosts of wrong, Fol - low - ing our Cap - tain  
2. Shout - ing loud ho - san - nas as we on - ward go, With de - ter - mi - na - tion  
3. "Vol - un - teers are want - ed," hear the Mas - ter say, Will you be en - list - ed  
4. Faith - ful to your du - ty, halt not by the way, Keep the ban - ner float - ing



with a hap - py song, Heed - ing not the man - y who are loit - 'ring by, For  
sin to o - ver - throw; Sa - tan's hosts are trem - bling, foes be - fore up fly, For  
in the might - y fray? Ev - 'ry Chris - tian an - swer, say - ing, "hear am I," Then  
for the King al - way, Great re - ward He'll give His sol - diers by and by, For



## Chorus



vic - to - ry is nigh, yes, vic - to - ry is nigh.  
vic - to - ry is nigh, yes, vic - to - ry is nigh. Vic - to - ry is nigh! yes,  
vic - t'ry will be nigh, yes, vic - t'ry will be nigh.  
vic - to - ry is nigh, yes, vic - to - ry is sigh.



vic - to - ry is nigh! Shout with voice tri - um - phant to the vault - ed sky; Vic - to - ry is



# *Victory Is Nigh*

nigh! yes, vic - to - ry is nigh! We will win the bat - tle for the King on high.

The image shows a musical score for the hymn "Victory Is Nigh". It consists of two staves. The top staff is a vocal line in G major (one flat) and 4/4 time. The bottom staff is a piano accompaniment in the same key and time. The lyrics are written below the vocal staff. The music is in a simple, hymn-like style with a clear melody and accompaniment.