

# Walking In Sunshine

"And He saith unto them, Follow Me." – Matt. 4:19



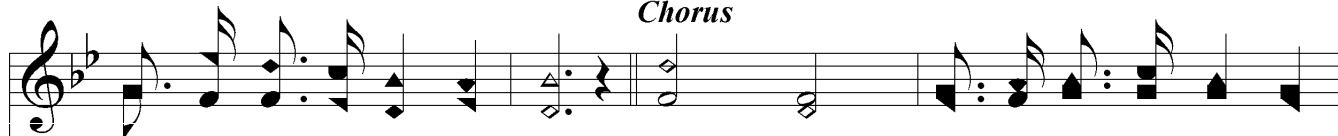
1. Walk - ing in the sun-shine, beau - ti - ful and bright, In the ros - y morn - ing,  
2. In the bright - est sun-shine, or the dark - est gloom, In the love - ly spring-time,  
3. In the gold - en sun-shine, or the shad-ows deep, When the storm is rag - ing,



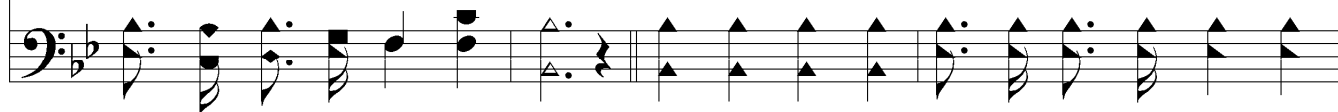
or the dew - y night; Stead - i - ly ad - vanc - ing on - ward day by day,  
or the sum - mers bloom; Hear the Sav - ior call - ing has - ten to o - bey,  
when it sinks to sleep; Trust - ing ill His mer - cy till the clos - ing day,



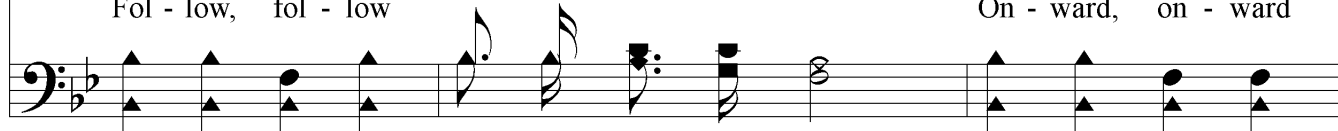
## Chorus



Fol - low Je - sus all the way. Fol - low, we will fol - low Je - sus;  
Fol - low Je - sus all the way. Fol - low, fol - low  
Fol - low Je - sus all the way.



Fol - low, fol - low day by day; On - ward  
Fol - low, fol - low On - ward, on - ward



# *Walking In Sunshine*

where - so - e'er He leads us, We will fol - low, Je - sus all the way.

The image shows a musical score for the hymn "Walking In Sunshine". It consists of two staves: a treble clef staff on top and a bass clef staff on the bottom. The key signature is one flat (B-flat), and the time signature is 4/4. The melody is written in the treble clef, and the bass line is in the bass clef. The lyrics are written below the treble staff. The music ends with a double bar line.