

Who Can It Be

Ab/Eb - SOL

Rather slow Effective as a solo



1. I wan - dered in sor - row and sin, My heart it was heav - y and
 2. I strug - gled in doubt and in fear, Not know - ing to whom I should
 3. I heard it a - gain and a - gain, Wher - ev - er my foot - steps did
 4. I turned to my Fa - ther a - bove, I read of His prom - is - es
 5. I'm grop - ing in dark - ness no more, His glo - ry il - lu - mines my



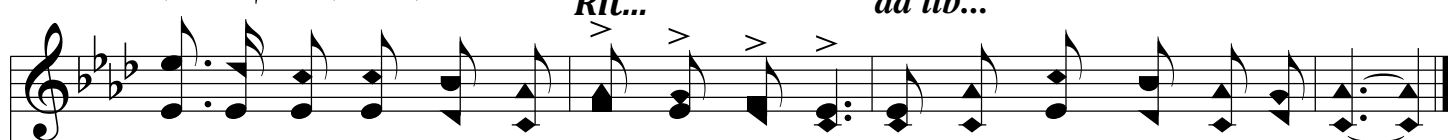
sore, I heard a voice say - ing, "A - rise, and come in, Oh!
 go, I heard a voice say - ing, "Son, be of good cheer," So
 roam; It melt - ed my heart with its pit - y - ing strain, It
 sure, I thought of my Sav - ior, His cross and His love, And
 way, I'm walk - ing by faith, and His prom - is - es are My



Refrain



wan - der in sor - row no more," Who can it be? Who can it be?
 sooth - ing - ly, ten - der and low. Who can it be? Who can it be?
 light - ed my soul of its gloom. Oh, it was Thee! Oh, it was Thee!
 oh, what a friend I found there! Oh, what a friend! Oh, what a friend!
 sol - ace and joy ev - 'ry day. Yes, ev - 'ry day! Yes, ev - 'ry day!



Thus I was won - der - ing, Who can it be Ten - der - ly call - ing to me?
 Thus I was won - der - ing, Who can it be Ten - der - ly call - ing to me?
 Sav - ior of men, oh, my Je - sus, 'twas Thee Ten - der - ly call - ing to me!
 Sav - ior of men Thou hast been un - to me, Sav - ior Thou'st been un - to me.
 Je - sus of Naz - a - reth light - eth my way, Je - sus now light - eth my way.

