

# Who Is On The Lord's Side



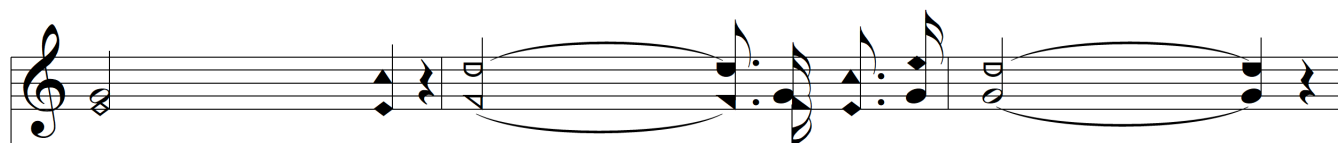
1. Who is on the Lord's side? Who will serve the King? Who will be His help - er,  
 2. Fierce may be the con - flict, Strong may - be the foe; But the King's own ar - my  
 3. Cho - sen to be sol - diers In an al - ien land, Cho-sen, called, and faith-ful,



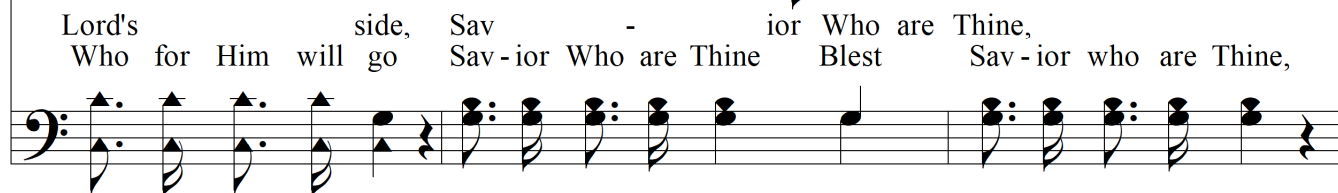
Oth - er souls to bring? Who will leave the world's side? Who will face the foe?  
 None can o - ver - throw; Round His stand - ard rang - ing, Vic - t'ry is se - cure;  
 For our Cap - tain's band; In His ser - vice roy - al, Let as not grow cold;



Who is oh the Lord's side? Who for Him will go? Who is on the  
 For His truth un - chang - ing Makes the tri - umph sure. Who is on the Lord's side,  
 Let us be right loy - al, No - ble, true, and bold. Who is on the Lord's side,



Lord's side, Sav - ior Who are Thine,  
 Who for Him will go Sav - ior Who are Thine Blest Sav - ior who are Thine,



# Who Is On The Lord's Side

The image displays a musical score for the hymn "Who Is On The Lord's Side". It consists of two systems of music, each with a vocal line and a piano accompaniment line. The vocal line is written in a soprano clef, and the piano accompaniment is in a bass clef. The music is in a 4/4 time signature. The first system of music has a vocal line with a long note on the first measure, followed by a series of eighth and quarter notes. The piano accompaniment consists of a steady eighth-note bass line. The second system of music follows a similar pattern. The lyrics are written below the vocal line.

We are on the Lord's side, Sav - ior we are Thine, Yes  
Sav - ior we are Thine.  
we are on the Lord's side, Sav - ior we are Thine.