

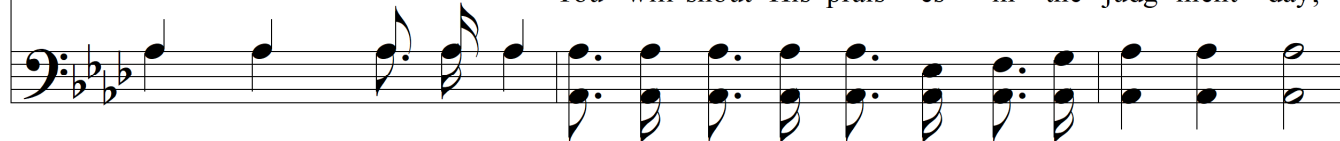
Christ Is All You Need



1. Are you heav - y - heart-ed, are you sore dis-tressed?
 2. Have you bro - ken vows and prom - is - es un - kept? Christ is all you need,
 3. Have you been ne - glect - ed for the cause you love?
 4. Let the world de - spise and scorn you as it may, Christ is all you need,



He's a Friend in-deed; Are you o - ver - bur - dened and with care dis-tressed?
 Once de - sert - ed and a - lone thy Sav - ior wept!
 He's a Friend in-deed; You shall be re - ward - ed in the home a - bove;
 You will shout His prais - es in the judg - ment day;



Refrain



Christ is all the Friend you need. Christ is all you need, He is a Friend in-deed;
 Christ is all you need, He is all you need, He is a Friend in-deed;



He's a Friend, He is a Friend in-deed; Christ is all you
 Christ is all you need, For He is a Friend in-deed; Christ is all you need, He



Christ Is All You Need

need,
is a Friend in - deed, Christ is all the Friend you need. A - men.

The image shows a musical score for the hymn "Christ Is All You Need". It consists of two staves: a treble clef staff on top and a bass clef staff on the bottom. The key signature is three flats (B-flat, E-flat, A-flat), and the time signature is 4/4. The melody is written in the treble staff, and the bass line is in the bass staff. The lyrics are placed between the two staves, aligned with the notes. The score ends with a double bar line and repeat dots.