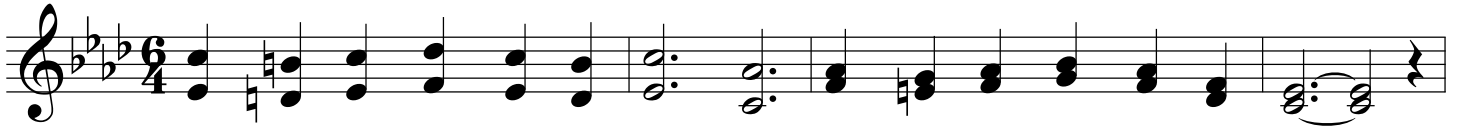


Dear To The Heart Of The Shepherd

A \flat



1. Dear to the heart of the Shep - herd, Dear are the sheep of His fold;
2. Dear to the heart of the Shep - herd, Dear are the lambs of His fold;
3. Dear to the heart of the Shep - herd, Dear are the "nine - ty and nine;"
4. Green are the pas - tures in - vit - ing, Sweet are the wa - ters and "still;"



Dear is the love that He gives them, Dear - er than sil - ver or gold.
Some from the pas - tures are stray - ing, Hun - gry and help - less and cold.
Dear are the sheep that have wan - dered Out in the de - sert to pine.
Lord, we will an - swer Thee glad - ly, "Yes, bless - ed Mas - ter, we will!



Dear to the heart of the Shep - herd, Dear are His "oth - er" lost sheep;
See, the good Shep - herd is seek - ing, Seek - ing the lambs that are lost;
Hark! He is ear - nest - ly call - ing, Ten - der - ly plead - ing to - day;
Make as Thy true un - der shep - herds, Give us a love that is deep;



O - ver the moun - tains He fol - lows, o - ver the wa - ters so deep.
Bring - ing them in with re - joic - ing, Saved at such in - fi - nite cost.
"Will you not seek for my lost ones, Off from my shel - ter a - stray?"
Send us out in - to the de - sert, Seek - ing Thy wan - der - ing sheep."

Chorus

Poco rit...



Out in the de - sert they wan - der, Hun - gry and help - less and cold;



Dear To The Heart Of The Shepherd

f a tempo

Off to the res - cue { He has - tens, } Bring - ing them back to the fold,
(4th verse) { we'll has - ten, }

The image shows a musical score for the hymn 'Dear To The Heart Of The Shepherd'. It consists of two staves: a treble clef staff on top and a bass clef staff on the bottom. The key signature is three flats (B-flat, E-flat, A-flat), and the time signature is 4/4. The music is marked 'f a tempo'. The lyrics are written below the treble staff. The first line of lyrics is 'Off to the res - cue { He has - tens, } Bring - ing them back to the fold,'. The second line of lyrics is '(4th verse) { we'll has - ten, }'. The music features a steady accompaniment in the bass staff and a melody in the treble staff. The piece concludes with a double bar line.