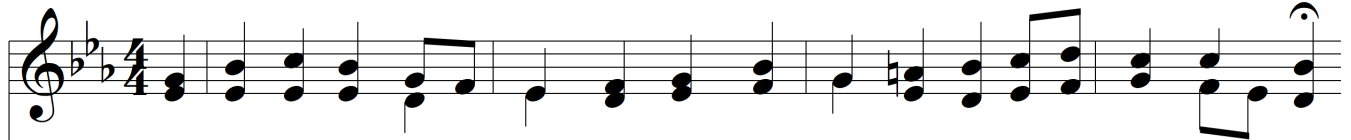
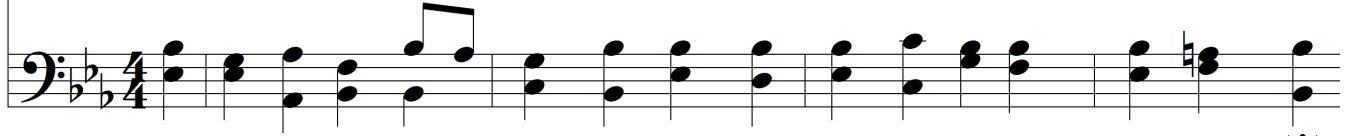


Eternal Father, Throned Above

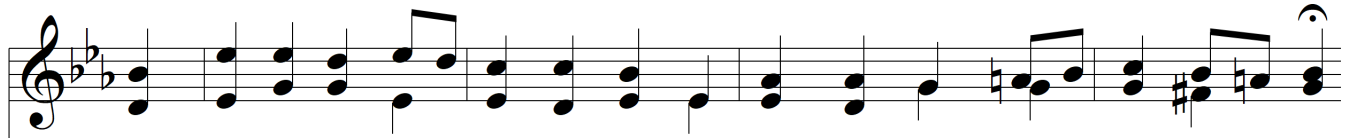
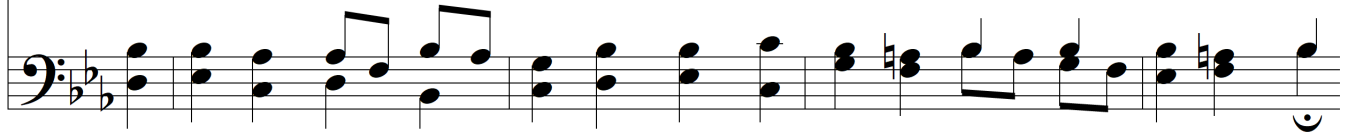
BARNBY L. M. D.



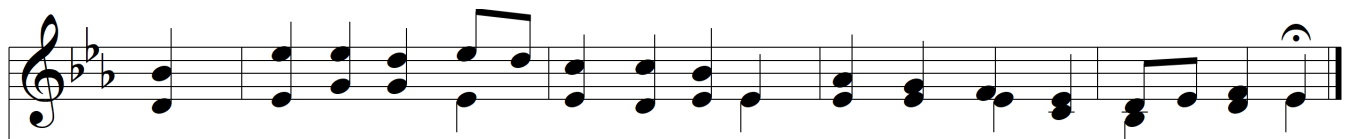
E - ter - nal Fa - ther, thron'd a - bove, Thou foun - tain of re - deem - ing love!



E - ter - nal Word! who left Thy throne For man's re - bel - lion to a - tone;



E - ter - nal Spir - it, who dost give That grace where - by our spir - its live;



Thou God of our sal - va - tion, be E - ter - nal prais - es paid to Thee.

