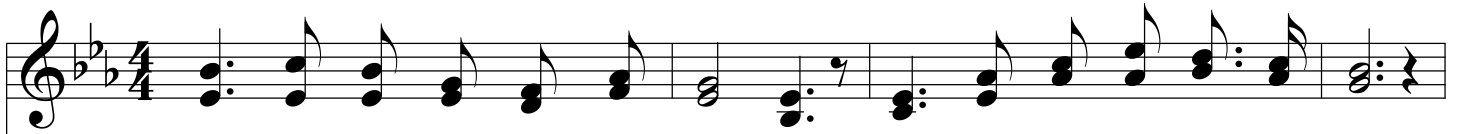


I Am With Thee

Isa. 41:10

E♭



1. Of - ten when my faith would fal - ter, When life seems a trou - bled sea;
2. When be - set by fier - y tri - als, He dis - pels my ev - 'ry fear;
3. In the tem - pest or the fur - nace, Where - so - e'er the path may lead;
4. Fear thou not, the words grow sweet - er, As I near my jour - ney's end;



I can bear my Sav - ior say - ing, Fear not, I will pi - lot thee.
As He soft - ly, sweet - ly whis - pers, Fear thou not, for I am near.
While I know He car - eth for me, "Fear thou not" meets all my need.
Fear thou not, for I am with thee, On that word I will de - pend.



Refrain



Fear thou not, for I am with thee, I will ev - er be thy Guide;



I Am With Thee

The image shows a musical score for the hymn "I Am With Thee". It consists of two staves: a treble clef staff at the top and a bass clef staff at the bottom. The key signature has two flats (B-flat and E-flat), and the time signature is 4/4. The melody is written in the treble staff, and the bass line is in the bass staff. The lyrics are written below the treble staff. The piece concludes with a *Rit...* marking and a fermata over the final note.

Rit...

I will nev-er leave thee lone - ly, Thou art safe what - e'er be - tide.
what-e'er be - tide.