

It Cannot Be That When We Die

IT MUST BE TRUE

Andante con espressione



1. It can - not be that when we die, Then all of life is done;
2. And yet some-times to us it seems That world is ver - y near;
3. It must be true, else Christ our Lord Would not have told us so;
4. And so be - neath earth's pris - on - bars We look tow'rd heav'n and home,



There is a bet - ter, bright - er world, That hath no need of sun:
As some - thing seen or heard in dreams, Its glo - ries then ap - pear.
He would not dis - ap - point our hearts, His word is sure, we know.
Where man - sions wait, not made with hands, Where life hath fade - less bloom:

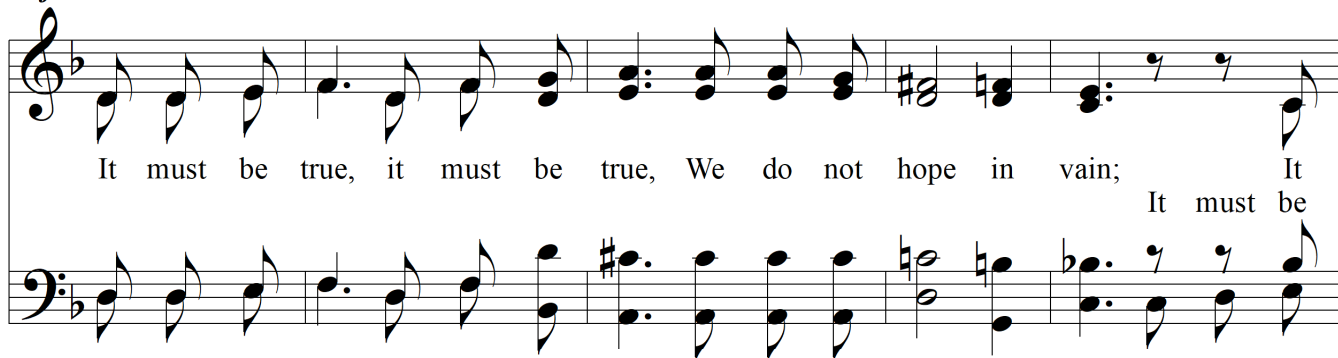


No ear hath heard, no eye hath seen Its mu - sic and its light;
And when with bat - ed breath we wait, While dear ones fade from view,
"A place for you!"— how clear, how plain!— He prom - ised to pre - pare,
And soon, like cap - tive birds set free, We, too, shall take our flight,



The veil of sense hangs dark be - tween, And hides that world from sight.
We al - most see the heav'n - ly gate Swing back as they pass thru.
That He, some day, would come a - gain, Him - self to take us there.
With Christ for - ev - er - more to be, Where faith is lost in sight.

Refrain



It must be true, it must be true, We do not hope in vain; It
It must be

It Cannot Be That When We Die

must be true, it must be true, That we shall live a - gain. A - men.
true, That we shall live a - gain.

The image shows a musical score for the hymn "It Cannot Be That When We Die". It consists of two staves: a treble clef staff on top and a bass clef staff on the bottom. The key signature has one flat (B-flat). The melody is written in the treble clef, and the bass line is in the bass clef. The lyrics are written below the treble staff. The music ends with a double bar line and repeat dots.