

# Still Out Of Christ

G



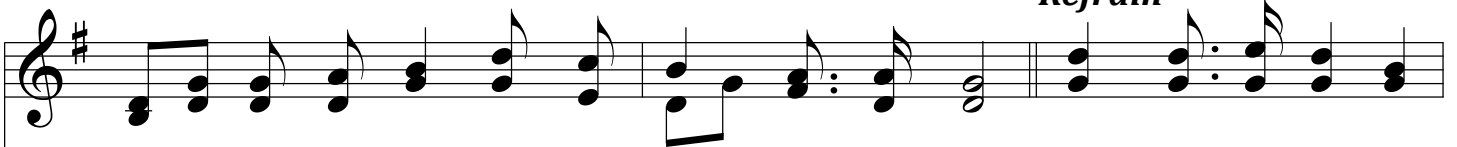
1. Still out of Christ, When so oft He has called you; Why will you long - er re -  
2. Still out of Christ, and the mo - ments so pre - cious; Night is ap - proch - ing; oh,  
3. Still out of Christ, yet for you there is mer - cy, If you are will - ing to  
4. Still out of Christ and the love He has prom - ised; How you are long - ing that



fuse to be - lieve? What can you hope from the world or its pleas - ure?  
what will you do? Still out of Christ, yet there's room at the foun - tain,  
turn from your sin; Yon - der He stands at the door of sal - va - tion,  
love to re - ceive! Haste where the star of your faith is di - rect - ing,



## Refrain



How can you trust them when both will de - ceive?  
Free are its wa - ters, and flow - ing for you. Come, come to Je - sus,  
Wait - ing to par - don and wel - come you in.  
Haste, and this mo - ment re - pent and be - lieve.



wea - ry, heav - y - heart - ed, Come, come to Je - sus while you may; Now He is



# *Still Out Of Christ*

wait - ing, wait - ing to re - ceive you, Hark! He is call - ing you to - day.

The image shows a musical score for the hymn 'Still Out Of Christ'. It consists of two staves: a vocal line in the treble clef and a piano accompaniment in the bass clef. The key signature is one sharp (F#), and the time signature is 4/4. The lyrics are written below the vocal line. The piano accompaniment features a steady bass line with chords that support the vocal melody. The piece concludes with a double bar line.