

The Best Friend Of All

A \flat



1. Do you seek for a friend who is al - ways the same, Who will
2. Would you lean on an arm that is a - ble to quell All the
3. Would you walk day by day in a ha - lo of light, In the
4. Would you dwell ev - er - more in the man - sions a - bove, 'Mid the



an - swer your sigh and your call? There is just such a Friend, I will
forc - es of ill that a - bound? Grasp the hand that was pierced to re -
smile of the an - gels of God? Would you know the re - pose that no
glo - ries that fade not a - way? Would you drink end - less bliss from the

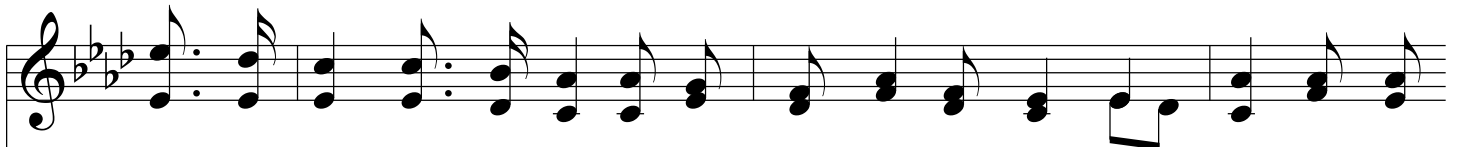


tell you His name— It is Je - sus, the best Friend of all.
move Sa - tan's spell, And thy soul's dear - est ref - uge is found.
sor - row can blight? Choose the path your Re - deem - er has trod.
fount of His love? Give your heart to the Sav - ior to - day.



Pre - cious Je - sus, the best Friend of all.

Chorus



Oh, the best Friend of all is the "Might - y to save," He ev - er will



The Best Friend Of All

D. S. al Fine

hear when you call; He poured out His soul to re - deem from the grave,

The image shows a musical score for a song. It consists of two staves: a treble clef staff on top and a bass clef staff on the bottom. The key signature is three flats (B-flat, E-flat, A-flat), and the time signature is 4/4. The melody is written in the treble staff, and the bass line is in the bass staff. The lyrics are written below the treble staff. The piece ends with a double bar line and a repeat sign.