

Unto You Is Everlasting

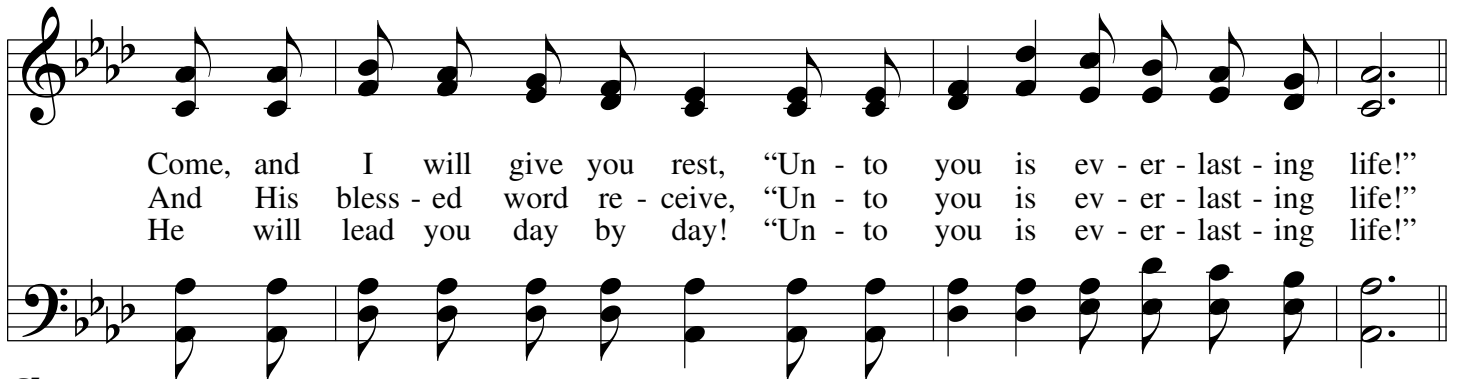
A \flat



1. Hear the prom - ise of the Lord, As re - cord - ed in His word,
2. Wea - ry pil - grim on the road To the judg - ment seat of God,
3. Cast on Je - sus all your care, And your bur - den He will bear,

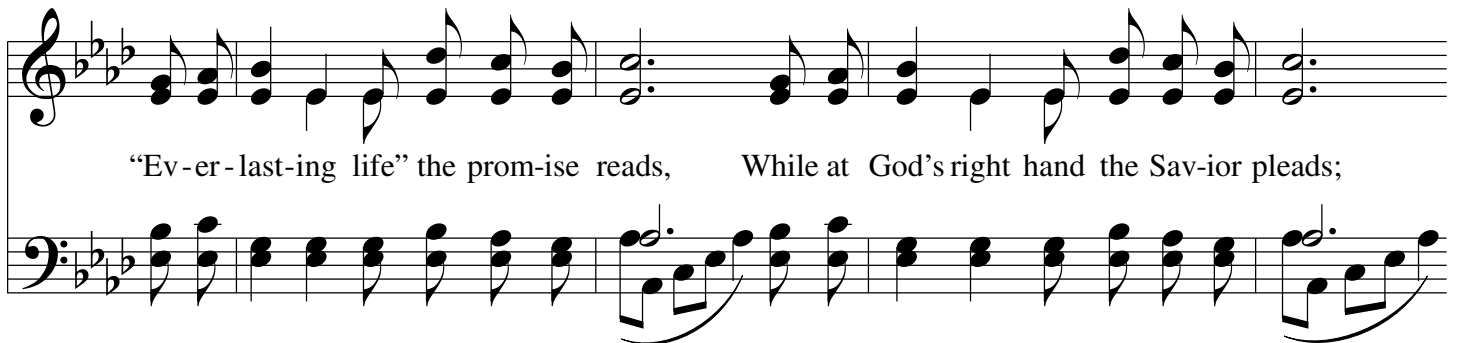


“Un - to you is ev - er - last - ing life!” Heav - y - lad - en and dis - tress'd,
“Un - to you is ev - er - last - ing life!” If on Je - sus you be - lieve,
“Un - to you is ev - er - last - ing life!” In the strait and nar - row way,



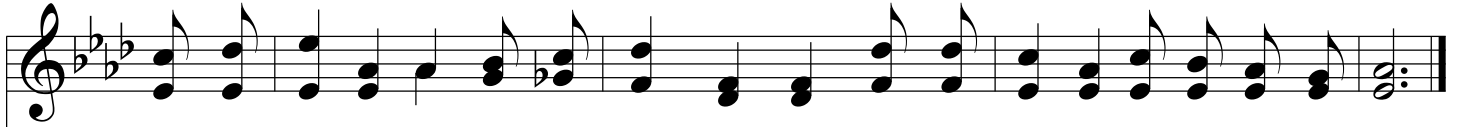
Come, and I will give you rest, “Un - to you is ev - er - last - ing life!”
And His bless - ed word re - ceive, “Un - to you is ev - er - last - ing life!”
He will lead you day by day! “Un - to you is ev - er - last - ing life!”

Chorus



“Ev - er - last - ing life” the prom - ise reads, While at God's right hand the Sav - ior pleads;

Unto You Is Everlasting



Will you come to-day, mak-ing Christ your stay? For with Him is ev-er-last-ing life.

