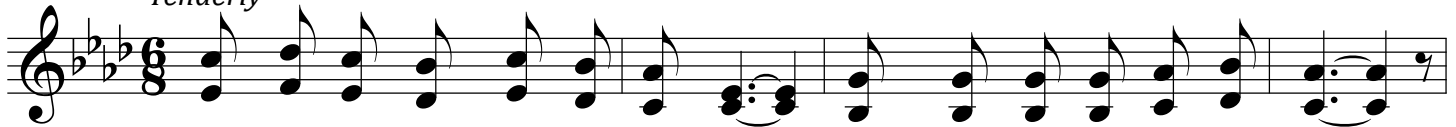


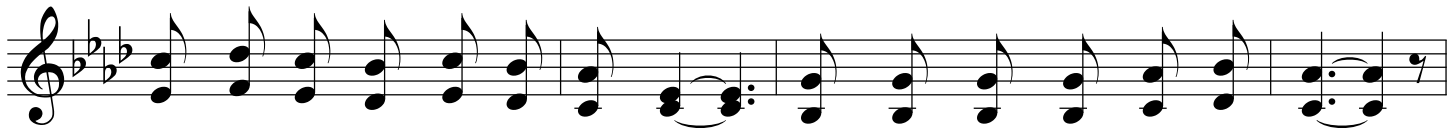
What Will You Do In That Day?

A \flat

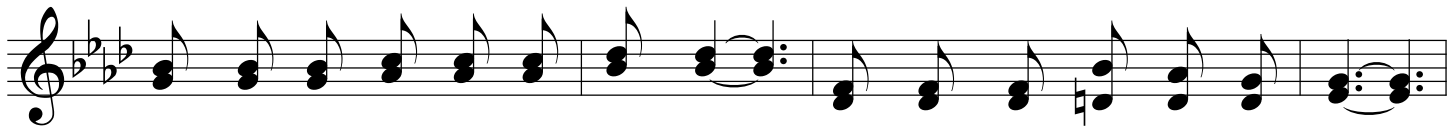
Tenderly



1. Lis - ten, O lis - ten to Je - sus, Ten - der - ly ask - ing your heart,
 2. Christ is a ref - uge for sin - ners, Flee to the arms of His love;
 3. Toil - ing for wealth that will per - ish, Charmed with the toys that de - cay,
 4. Think of the lov'd ones in heav - en, In yon - der cit - y of light,



Seek - ing to res - cue and save you, And His rich grace to im - part!
 If you ne - glect this sal - va - tion, How can you meet Him a - bove?
 Blind - ed by sin and by fol - ly, Sin - ning from day un - to day,
 Wait - ing for you at the por - tal; What if your soul take its flight?



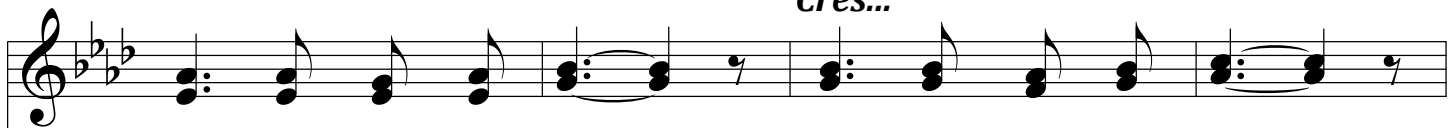
Oh! if His calls are all slight - ed, And in your sins you still go,
 Can you not give up your pleas - ures, Turn from earth's tri - fles a - way?
 Sin - ner, just think of the wag - es You for your sin shall re - ceive!
 Would you be read - y to greet them, Anx - ious the gates to pass thru?



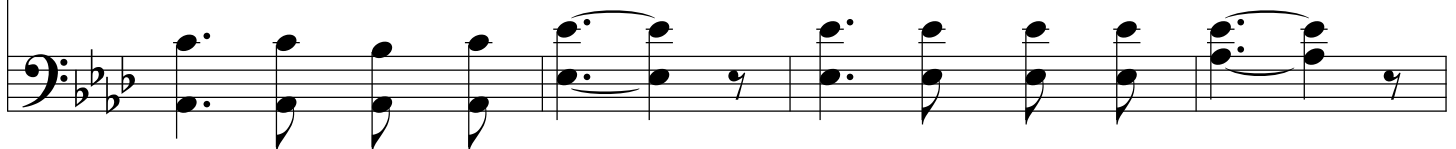
What will you do in the judg - ment, Won - der - ful days of great woe?
 Oh! if you cling to your i - dols, What will you do in that day?
 Turn to the dear, lov - ing Sav - ior, Hum - bly con - fess and be - lieve!
 If you have no hope in Je - sus, Sin - ner, then, what will you do?

Chorus

Cres...



Soul, what will you do? Soul, what will you do?



What Will You Do In That Day?

Oh! what will you do In that won - der - ful, won - der - ful day?

Repeat pp

The image shows a musical score for the song "What Will You Do In That Day?". It consists of two staves: a treble clef staff on top and a bass clef staff on the bottom. The key signature is three flats (B-flat, E-flat, A-flat), and the time signature is 4/4. The melody is written in the treble clef, and the accompaniment is in the bass clef. The lyrics are: "Oh! what will you do In that won - der - ful, won - der - ful day?". The word "Repeat" is written above the final measure of the melody, followed by the dynamic marking "pp".