

When The Shadows Flee



1. Smil - ing skies will bend a - bove us, When the shad - ows flee; Hearts now
2. Fet - ters nev - er - more will bind us, When the shad - ows flee; This dark
3. We shall view our home su - per - nal, When the shad - ows flee; We shall



cold a - gain will love us, When the shad - ows flee; We shall lose our care and
vale will be be - hind us, When the shad - ows flee; There will be no tem - pest
meet our King e - ter - nal, When the shad - ows flee; There, where death will reach us



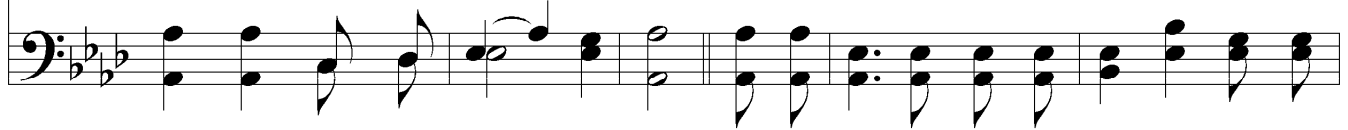
sor - row, Trou - ble nev - er - more to - mor - row, On that bless - ed, peace - ful
sweep - ing, - In our lov - ing Fa - ther's keep - ing We shall wake, where none are
nev - er, There, where naught our hearts shall sev - er, We shall dwell with Christ for -



Chorus



mor - row, When the shad - ows flee.
weep - ing, When the shad - ows flee. With e - ter - nal day be - fore us, And our
ev - er, When the shad - ows flee.



When The Shadows Flee

The image shows a musical score for the hymn 'When The Shadows Flee'. It consists of two staves: a treble clef staff at the top and a bass clef staff at the bottom. The key signature is three flats (B-flat, E-flat, A-flat) and the time signature is 4/4. The melody in the treble staff begins with a dotted quarter note on G4, followed by quarter notes on A4, B-flat4, and C5. The bass staff provides a harmonic accompaniment with chords and moving lines. The lyrics are written below the treble staff. The piece concludes with a 'Rit...' (ritardando) marking and a double bar line.

Sav - ior watch - ing o'er us, We shall join the end - less cho - rus, When the shad - ows flee.