

# Why Not Say Yes To-night?



*Duet*

1. O why not say Yes to the Sav - ior to - night? He's ten - der - ly  
 2. For with you the Spir - it will not al - ways plead - O do not re -  
 3. Take Christ for your Sav - ior, then all shall he well, The mor - row let

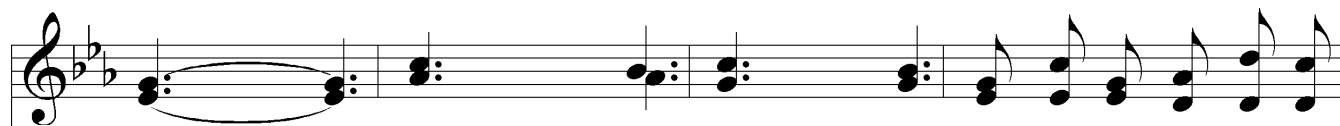
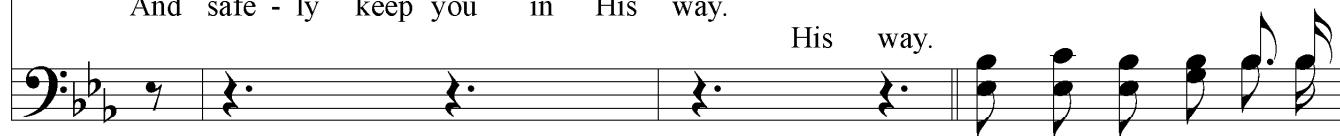


plead - ing with thee To come to Him now with thy sin - bur - den'd heart  
 ject Him to - night! To - mor - row may bring you the dark - ness of death,  
 bring what it may; His love shall pro - tect you, His Spir - it shall guide,

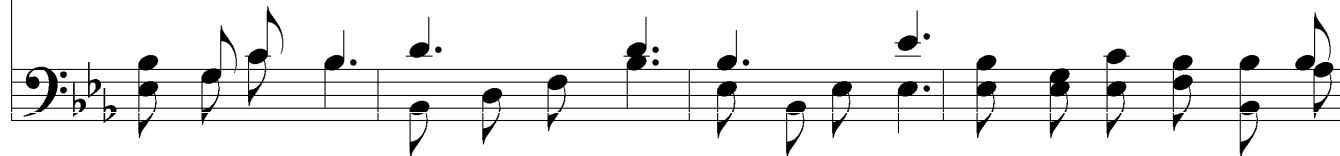


*Chorus*

For par - don so full and so free. so free.  
 Un - bro - ken by heav - en - ly light. Heav'n - ly light. Why not say Yes to -  
 And safe - ly keep you in His way. His way. Why not say Yes to the



night? Why not? Why not? While He so gen - tly, so  
 Sav - ior to - night? Say Yes! Say Yes!



Why not say Yes? Why not to-night?

# Why Not Say Yes To-night?

ten - der - ly pleads, O ac - cept Him to - night! (to - night!)  
ac - cept Him to - night!

The image shows a musical score for the hymn "Why Not Say Yes To-night?". It consists of two staves: a treble clef staff on top and a bass clef staff on the bottom. The key signature is one flat (B-flat major or D minor), and the time signature is 4/4. The melody is written in the treble staff, and the bass line is in the bass staff. The lyrics are written below the treble staff. The melody features a series of eighth and quarter notes, with a final phrase that is repeated. The bass line provides a simple harmonic accompaniment with chords and single notes.