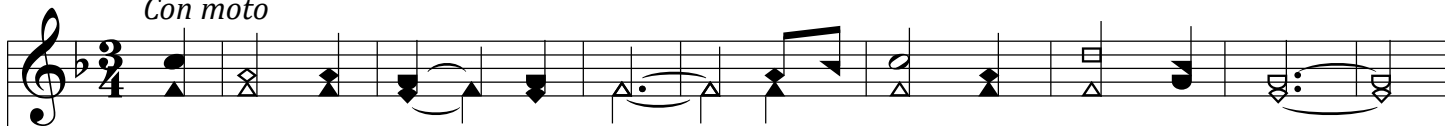


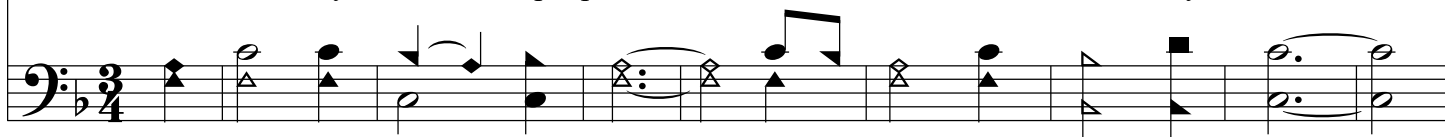
Believe Not Those Who Say

F/C - SOL

Con moto



1. Be - lieve not those who say, The up - ward path is smooth,
2. It is the on - ly road Un - to the realms of joy;
3. To la - bor and to love, To par - don and en - dure,
4. Be this thy con - stant aim, Thy hope, thy chief de - light;
5. If but thy God ap - prove, And if, with - in thy breast,



Lest thou shouldst stum - ble in the way, And faint be - fore the truth.
But he who seeks that blest a - bode Must all his pow'rs em - ploy.
To lift thy heart to God a - bove, And keep thy con - science pure—
What mat - ter who should whis - per blame, Or who should scorn or slight,
Thou feel the com - fort of His Love, The ear - nest of His rest?

