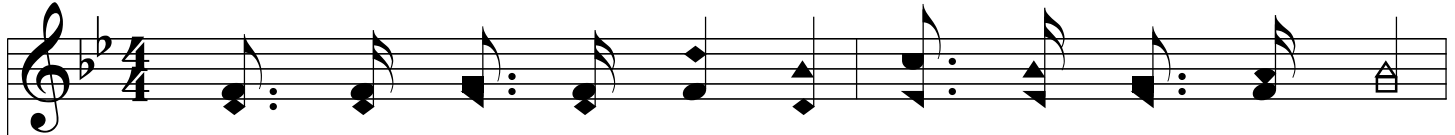


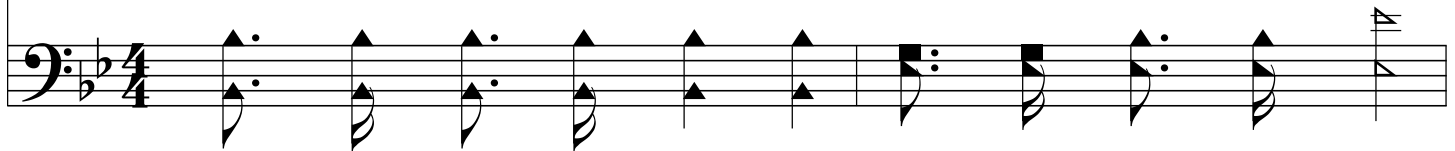
Suenen Dulces Himnos

Ring the Bells of Heaven

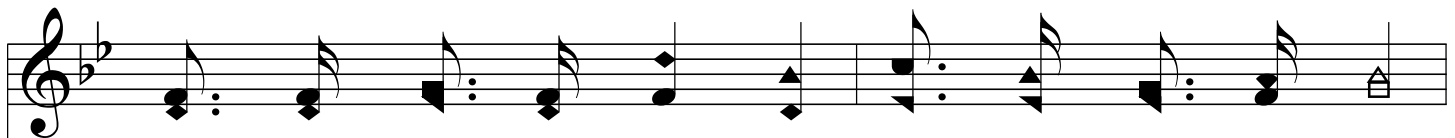
B \flat /F - SOL



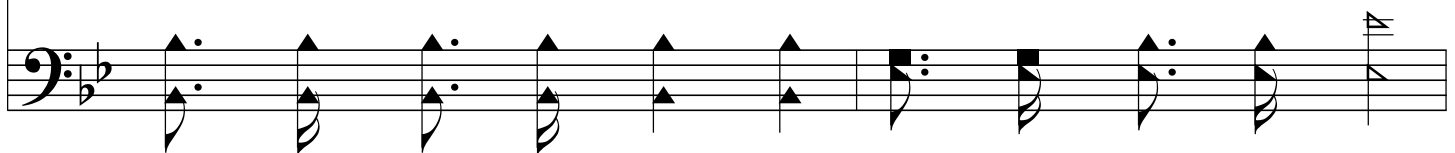
1. ¡Sue - nen dul - ces him - nos gra - tos al Se - ñor,
 2. Mon - tes y co - lla - dos flu - yan le - che_y miel,
 3. La - ta_en nues - tros pe - chos no - ble gra - ti - tud
1. Ring the bells of heav - en! there is joy to - day
2. Ring the bells of heav - en! there is joy to - day,
3. Ring the bells of heav - en! spread the feast to - day!



Y_óí - gan - se_en con - cier - to_u - ni - ver - sal!
 Y_a - bun - dan - cia_es - par - zan y so - laz.
 Ha cia_él que nos brin - da re - den - ción;
For a soul, re - turn - ing from the wild!
For the wan - d'rer now is rec - on - ciled.
An - gels, swell the glad, tri - um - phant strain!



Des - de_el al - to cie - lo ba - ja_el Sal - va - dor
 Gó - cen - se los pue - blos, gó - ce - se_Is - ra - el,
 Y_a Je - sús el Cris - to, que nos da sa - lud,
See! the Fa - ther meets him out up - on the way,
Yes, a soul is res - cued from his sin - ful way,
Tell the joy - ful tid - ings; bear it far a - way,



Suenen Dulces Himnos

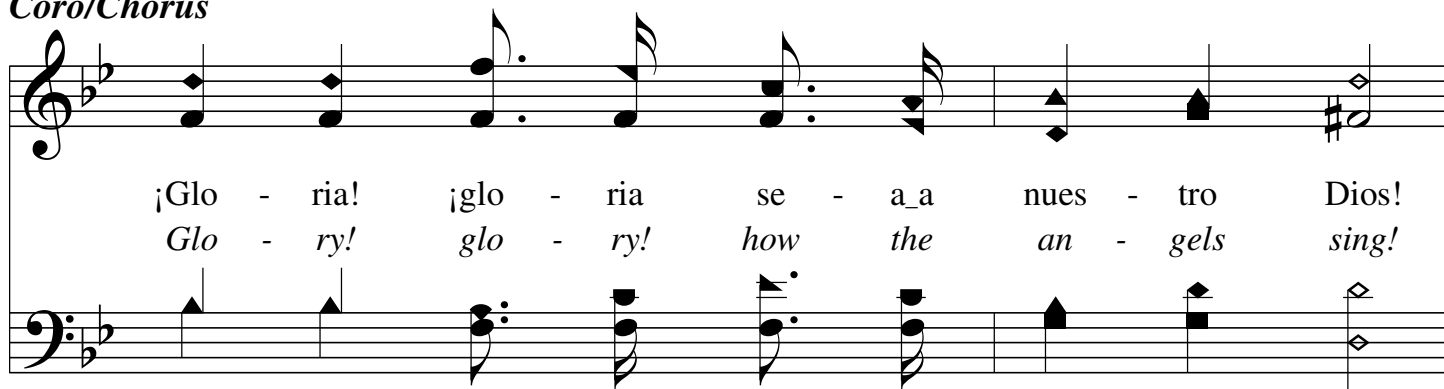
Ring the Bells of Heaven

P.2

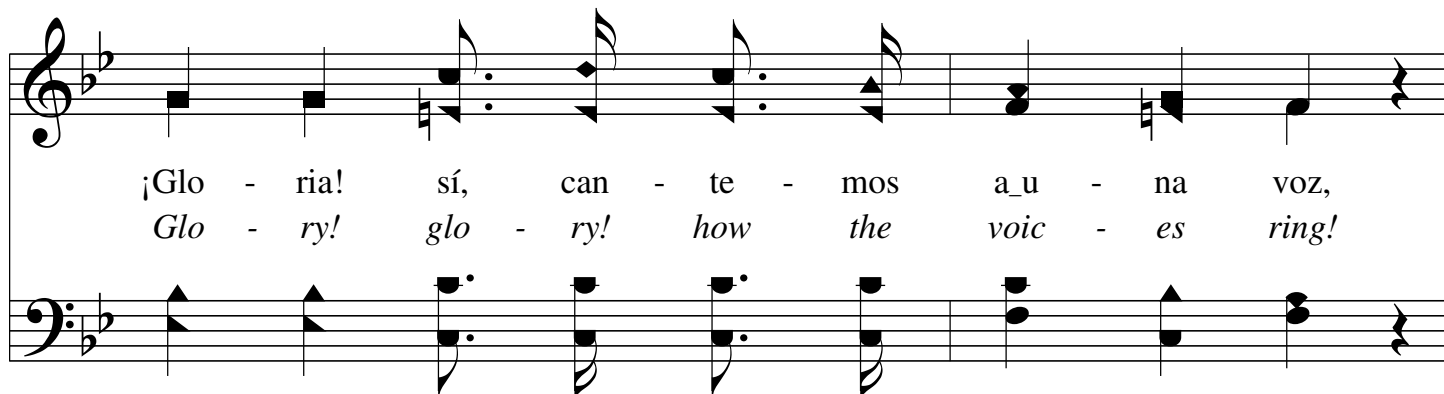


Pa - ra be - ne - fi - cio del mor - tal.
Que a_la tie - rra vie - ne ya la paz.
Tri - bu - te - mos nues - tra_a - do - ra - ción.
Wel - com - ing His wea - ry, wan - d'ring child.
And is born a - new, a ran - somed child.
For a pre - cious soul is born a - gain.

Coro/Chorus



¡Glo - ria! ¡glo - ria se - a_a nues - tro Dios!
Glo - ry! glo - ry! how the an - gels sing!

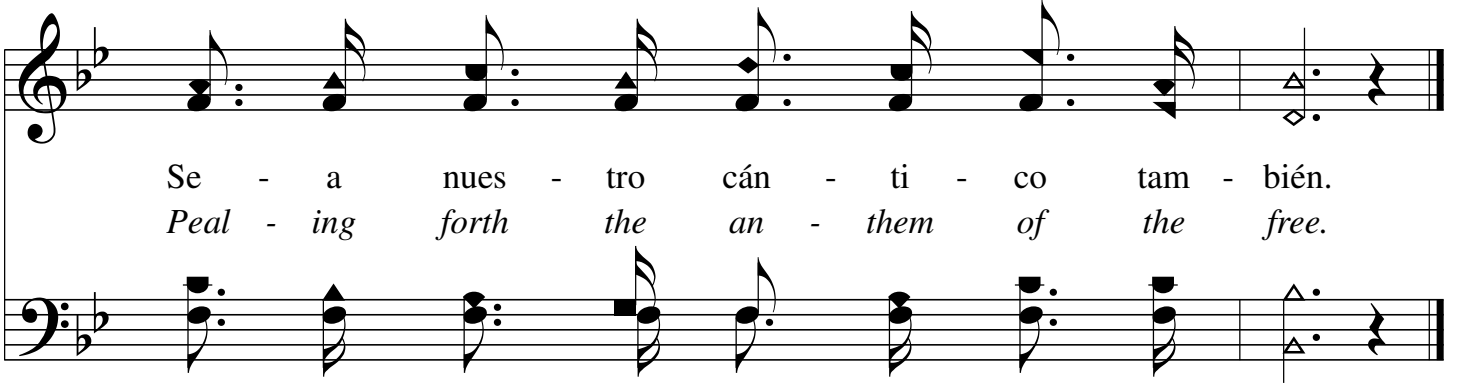


¡Glo - ria! sí, can - te - mos a_u - na voz,
Glo - ry! glo - ry! how the voic - es ring!



Y_el can - tar de glo - ria, que se_o - yó en_Be - lén,
'Tis the ran - somed ar - my, like a might - y sea,

Suenen Dulces Himnos
Ring the Bells of Heaven



Se - a nues - tro cán - ti - co tam - bién.
Peal - ing forth the an - them of the free.

The image shows a musical score for a hymn. It consists of two staves: a vocal line in the treble clef and a bass line in the bass clef. The key signature has one flat (B-flat), and the time signature is 4/4. The vocal line features a melody of eighth and quarter notes with lyrics underneath. The bass line provides a harmonic accompaniment with chords and single notes. The lyrics are in Spanish and English, with the English version in italics.