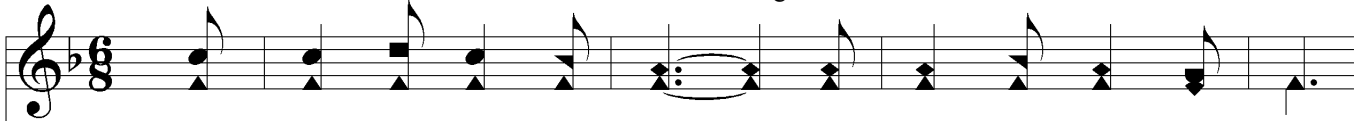
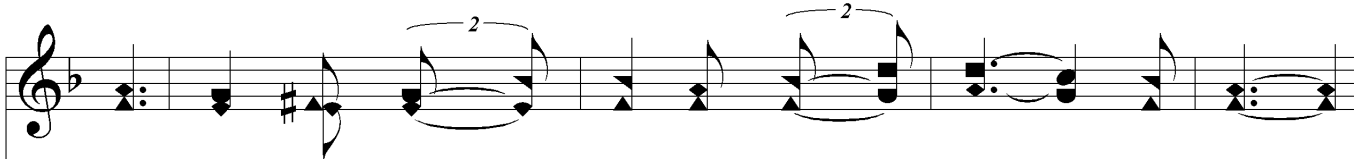


Good Christian People All

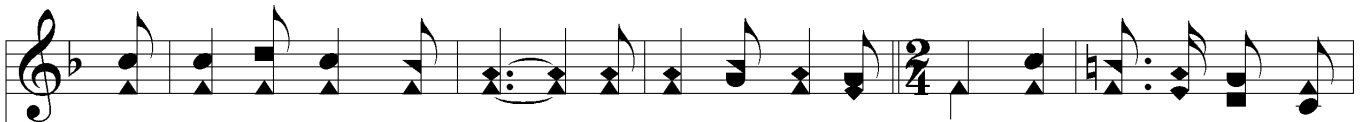
ST. ZACHARIAS Irregular



1. Good Chris - tian peo - ple all, A mer - ry Christ - mas day:
2. O, praise the King of Heav'n! For on this bless - ed morn
3. Springs forth a fruit - ful rod From Jes - se's roy - al stem,
4. En - wrapt in swath - ing bands, And in a man - ger laid,
5. The dark - ness now is past, The light of life doth shine,



Hark how the bells do call! A - rise, and come a - way!
To us a Son is giv'n, To us a Child is born!
And Christ, In - car - nate God, Is in born Beth - le - hem.
Be - hold Him, by Whose hands The heav'ns and earth were made.
The day hath dawned at last, Be - hold the ap - point - ed sign.



Come see the won - drous thing The an - gels' lips re - veal! And let the joy - bells



ring A wel - come to the new - born King, With a mer - ry, mer - ry Christ - mas peal,



Good Christian People All

The image shows a musical score for the hymn 'Good Christian People All'. It consists of two systems of music, each with a vocal line and a piano accompaniment line. The first system starts with a treble clef and a bass clef, both in the key of B-flat major. The vocal line begins with a forte (*f*) dynamic. The lyrics for the first system are: 'With a mer - ry Christ - mas peal. No - el! No - el! No - el! Let all up - on the'. The second system continues the melody and accompaniment. The lyrics for the second system are: 'earth that dwell, Sing prais - es to Em - ma - nu - el! No - el! No - el! No - el!'. The second system includes a fortissimo (*ff*) dynamic and a 'Rit...' (ritardando) instruction. The score concludes with a double bar line.

f

With a mer - ry Christ - mas peal. No - el! No - el! No - el! Let all up - on the

ff *Rit...*

earth that dwell, Sing prais - es to Em - ma - nu - el! No - el! No - el! No - el!